

PACE1 Rabbit pAb

CatalogNo: YN3405

Key Features

Host Species

- Rabbit

Reactivity

- Human, Mouse

Applications

- WB

MW

- 82kD (Calculated)

Isotype

- IgG

Recommended Dilution Ratios

WB 1:500-2000

Storage

Storage* -15°C to -25°C/1 year (Do not lower than -25°C)

Formulation Liquid in PBS containing 50% glycerol, 0.5% BSA and 0.02% sodium azide.

Basic Information

Clonality Polyclonal

Immunogen Information

Immunogen Synthesized peptide derived from human PACE1 AA range: 519-569

Specificity This antibody detects endogenous levels of PACE1 at Human/Mouse

Target Information

Gene name SCYL3 PACE1

Protein Name PACE1

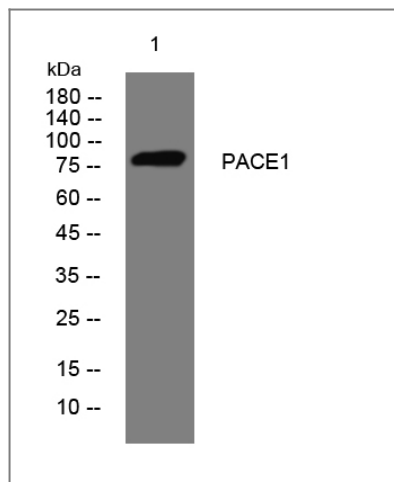
Organism	Gene ID	UniProt ID
Human	57147;	Q8IZE3;
Mouse	240880;	Q9DBQ7;

Cellular Localization Cytoplasm . Golgi apparatus . Cell projection, lamellipodium . Colocalized with EZR/VIL2, actin and CD44 in lamellipodia.

Tissue specificity Ubiquitously expressed.

Function Domain:The protein kinase domain is predicted to be catalytically inactive.,Function:May play a role in regulating cell adhesion/migration complexes in migrating cells.,PTM:May be myristoylated; myristoylation may target it to Golgi compartment.,PTM:Phosphorylated.,similarity:Belongs to the protein kinase superfamily.,similarity:Contains 1 protein kinase domain.,similarity:Contains 4 HEAT repeats.,subcellular location:Colocalized with EZR/VIL2, actin and CD44 in lamellipodia.,subunit:Interacts with EZR/VIL2 C-terminal domain.,tissue specificity:Ubiquitously expressed.,

Validation Data



Western blot analysis of lysates from SW480 cells, primary antibody was diluted at 1:1000, 4° over night

Contact information

Orders: order.cn@immunoway.com
Support: support.cn@immunoway.com
Telephone: 400-8787-807(China)
Website: <http://www.immunoway.com.cn>
Address: 2200 Ringwood Ave San Jose, CA 95131 USA



Please scan the QR code to access additional product information:
PACE1 Rabbit pAb

