

## S7A14 Rabbit pAb

CatalogNo: YN3383

### | Key Features

#### Host Species

- Rabbit

#### Reactivity

- Human, Mouse

#### Applications

- WB

#### MW

- 85kD (Observed)

#### Isotype

- IgG

### | Recommended Dilution Ratios

WB 1:500-2000

### | Storage

**Storage\*** -15°C to -25°C/1 year (Do not lower than -25°C)

**Formulation** Liquid in PBS containing 50% glycerol, 0.5% BSA and 0.02% sodium azide.

### | Basic Information

**Clonality** Polyclonal

### | Immunogen Information

**Immunogen** Synthesized peptide derived from human S7A14 AA range: 50-100

**Specificity** This antibody detects endogenous levels of S7A14 at Human/Mouse

### | Target Information

**Gene name** SLC7A14 KIAA1613

Protein Name S7A14

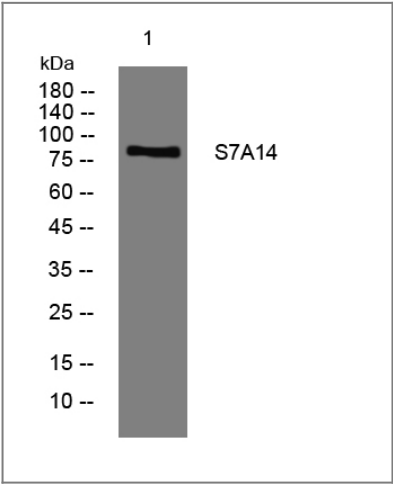
Organism	Gene ID	UniProt ID
Human	<a href="#">57709</a> ;	<a href="#">Q8TBB6</a> ;
Mouse	<a href="#">241919</a> ;	<a href="#">Q8BXR1</a> ;

**Cellular Localization** Lysosome membrane ; Multi-pass membrane protein . Exhibits a punctated pattern in the cytoplasm, which partially overlaps with lysosomes.

**Tissue specificity** Expressed in skin fibroblasts.

**Function** sequence Caution:Translated as Glu.,similarity:Belongs to the amino acid-polyamine-organocation (APC) superfamily. Cationic amino acid transporter (CAT) (TC 2.A.3.3) family.,

Validation Data



Western blot analysis of lysates from PC-12 cells, primary antibody was diluted at 1:1000, 4°over night

Contact information

Orders: order.cn@immunoway.com  
Support: support.cn@immunoway.com  
Telephone: 400-8787-807(China)  
Website: http://www.immunoway.com.cn  
Address: 2200 Ringwood Ave San Jose, CA 95131 USA



Please scan the QR code to access additional product information:  
**S7A14 Rabbit pAb**