

## PTHD3 Rabbit pAb

CatalogNo: YN3364

### Key Features

#### Host Species

- Rabbit

#### Reactivity

- Human, Mouse

#### Applications

- WB

#### MW

- 85kD (Observed)

#### Isotype

- IgG

### Recommended Dilution Ratios

WB 1:500-2000

### Storage

**Storage\*** -15°C to -25°C/1 year (Do not lower than -25°C)

**Formulation** Liquid in PBS containing 50% glycerol, 0.5% BSA and 0.02% sodium azide.

### Basic Information

**Clonality** Polyclonal

### Immunogen Information

**Immunogen** Synthesized peptide derived from human PTHD3 AA range: 244-294

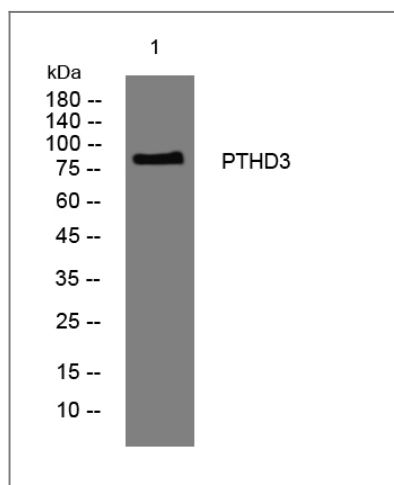
**Specificity** This antibody detects endogenous levels of PTHD3 at Human/Mouse

### Target Information

**Gene name** PTCHD3 PTR

<b>Protein Name</b>	PTHD3		
	<b>Organism</b>	<b>Gene ID</b>	<b>UniProt ID</b>
	Human	<a href="#">374308;</a>	<a href="#">Q3KNS1;</a>
	Mouse	<a href="#">74675;</a>	<a href="#">Q0EEE2;</a>
<b>Cellular Localization</b>	Cell projection, cilium, flagellum membrane ; Multi-pass membrane protein . Endoplasmic reticulum membrane ; Multi-pass membrane protein . Localizes to the midpiece of the sperm tail. .		
<b>Tissue specificity</b>	Expressed in germ cells of the testis (at protein level) (PubMed:17904097). Detected in blood lymph, colon, small intestine, ovary, testis, prostate, thymus and spleen with highest levels in testis (PubMed:21439084).		
<b>Function</b>	Function:May play a role in sperm development or sperm function.,sequence Caution:Translated as stop.,similarity:Belongs to the patched family.,similarity:Contains 1 SSD (sterol-sensing) domain.,subcellular location:Localizes to the midpiece of the sperm tail.,tissue specificity:Expressed in germ cells of the testis (at protein level).,		

## Validation Data



Western blot analysis of lysates from MCF-7 cells, primary antibody was diluted at 1:1000, 4° over night

## Contact information

Orders: [order.cn@immunoway.com](mailto:order.cn@immunoway.com)  
 Support: [support.cn@immunoway.com](mailto:support.cn@immunoway.com)  
 Telephone: 400-8787-807(China)  
 Website: <http://www.immunoway.com.cn>  
 Address: 2200 Ringwood Ave San Jose, CA 95131 USA



Please scan the QR code to access additional product information:  
**PTHD3 Rabbit pAb**

