

NSUN2 Rabbit pAb

CatalogNo: YN3363

| Key Features

Host Species

- Rabbit

Reactivity

- Human, Mouse

Applications

- WB

MW

- 85kD (Observed)

Isotype

- IgG

| Recommended Dilution Ratios

WB 1:500-2000

| Storage

Storage* -15°C to -25°C/1 year (Do not lower than -25°C)

Formulation Liquid in PBS containing 50% glycerol, 0.5% BSA and 0.02% sodium azide.

| Basic Information

Clonality Polyclonal

| Immunogen Information

Immunogen Synthesized peptide derived from human NSUN2 AA range: 658-708

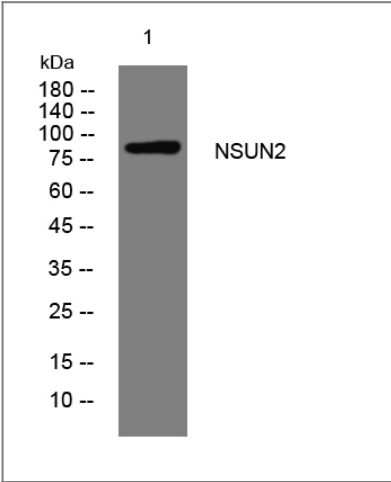
Specificity This antibody detects endogenous levels of NSUN2 at Human/Mouse

| Target Information

Gene name NSUN2 SAKI TRM4

Protein Name	NSUN2		
	Organism	Gene ID	UniProt ID
	Human	54888;	Q08J23;
	Mouse	28114;	Q1HFZ0;
Cellular Localization	Nucleus, nucleolus . Cytoplasm . Mitochondrion . Cytoplasm, cytoskeleton, spindle . Secreted, extracellular exosome . Concentrated in the nucleolus during interphase and translocates to the spindle during mitosis as an RNA-protein complex that includes 18S ribosomal RNA (PubMed:19596847). In testis, localizes to the chromatoid body (By similarity). .		
Tissue specificity	Expressed in adult and fetal brain and in lymphoblastoid cells.		
Function	Catalytic activity:S-adenosyl-L-methionine + tRNA = S-adenosyl-L-homocysteine + tRNA containing 5-methylcytosine.,Function:RNA methyltransferase that methylates tRNAs, and possibly RNA polymerase III transcripts. Methylates cytosine to 5-methylcytosine (m5C) at position 34 of intron-containing tRNA(Leu)(CAA) precursors. Not able to modify tRNAs at positions 48 or 49. May act downstream of Myc to regulate epidermal cell growth and proliferation.,PTM:Phosphorylated at Ser-139 by Aurora-B/STK12 during mitosis, leading to abolish methyltransferase activity and the interaction with NPM1.,similarity:Belongs to the methyltransferase superfamily. RsmB/NOP family. TRM4 subfamily.,subcellular location:Concentrated in the nucleolus during interphase and distributed in the perichromosome and cytoplasm during mitosis.,subunit:Interacts with NPM1 and NCL during interphase; interaction is disrupted following phosphorylation at Ser-139.,		

| Validation Data



Western blot analysis of lysates from 293T cells, primary antibody was diluted at 1:1000, 4°over night

| Contact information

Orders: order.cn@immunoway.com
Support: support.cn@immunoway.com
Telephone: 400-8787-807(China)
Website: <http://www.immunoway.com.cn>
Address: 2200 Ringwood Ave San Jose, CA 95131 USA



Please scan the QR code
to access additional
product information:
NSUN2 Rabbit pAb

For Research Use Only. Not for Use in Diagnostic Procedures.

[Antibody](#) | [ELISA Kits](#) | [Protein](#) | [Reagents](#)