

ZNT5 Rabbit pAb

CatalogNo: YN3353

Key Features

Host Species

- Rabbit

Reactivity

- Human, Mouse

Applications

- WB

MW

- 85kD (Observed)

Isotype

- IgG

Storage

Storage* -15°C to -25°C/1 year (Do not lower than -25°C)

Formulation Liquid in PBS containing 50% glycerol, 0.5% BSA and 0.02% sodium azide.

Recommended Dilution Ratios

WB 1:500-2000

Basic Information

Clonality Polyclonal

Immunogen Information

Immunogen Synthesized peptide derived from human ZNT5 AA range: 106-156

Specificity This antibody detects endogenous levels of ZNT5 at Human/Mouse

Target Information

Gene name SLC30A5 ZNT5 ZNTL1 ZTL1 UNQ863/PRO1879

Protein Name ZNT5

Organism	Gene ID	UniProt ID
Human	64924;	Q8TAD4;
Mouse	69048;	Q8R4H9;

Cellular Localization

Golgi apparatus , trans-Golgi network membrane ; Multi-pass membrane protein . Perimeter of granules , localizes to the brush border membrane of the enterocyte. Concentrated in early compartments of the secretory pathway such as COPII-coated vesicles.

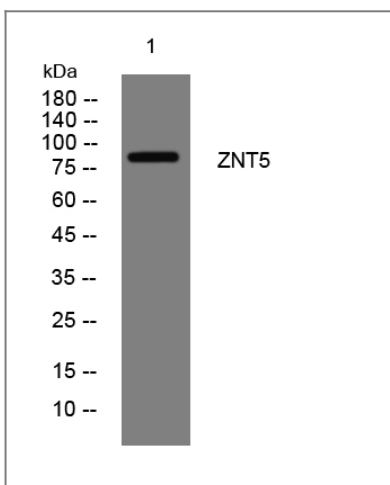
Tissue specificity

Ubiquitously expressed. Highly expressed in pancreas , liver and kidney. Expressed abundantly in insulin-containing beta cells , undetectable in other endocrine cell types including glucagon-secreting alpha cells and most acinar cells.

Function

Function:Functions as a zinc transporter. May be a transporter of zinc into beta cells in order to form insulin crystals. Partly regulates cellular zinc homeostasis. Required with ZNT7 for the activation of zinc-requiring enzymes , alkaline phosphatases (ALPs) . Transports zinc into the lumens of the Golgi apparatus and vesicular compartments where ALPs locate , thus , converting apoALPs to holoALPs. Required with ZNT6 and ZNT7 for the activation of TNAP. ,induction:Increased intracellular zinc level , resulting from extracellular zinc supplementation , do not induce any up- or down-regulation of gene expression. Up-regulated by zinc depletion. ,miscellaneous:The histidine-rich loop is essential for ZNT5 and ZNT6 heterooligomeric complexes to activate TNAP. ,similarity:Belongs to the cation diffusion facilitator (CDF) transporter (TC 2.A.4) family. SLC30A subfamily. ,subcellular location:Perimeter of granules , localizes to the brush border membrane of the enterocyte. Concentrated in early compartments of the secretory pathway such as COPII-coated vesicles. ,subunit:Heterooligomer. Interacts with ZNT6. ,tissue specificity:Ubiquitously expressed. Highly expressed in pancreas , liver and kidney. Expressed abundantly in insulin-containing beta cells , undetectable in other endocrine cell types including glucagon-secreting alpha cells and most acinar cells. ,

Validation Data



Western blot analysis of lysates from HpeG2 cells, primary antibody was diluted at 1:1000, 4°C over night

Contact information

Orders: order.cn@immunoway.com
Support: support.cn@immunoway.com
Telephone: 400-8787-807(China)
Website: <http://www.immunoway.com.cn>
Address: 2200 Ringwood Ave San Jose, CA 95131 USA



Please scan the QR code
to access additional
product information:
ZNT5 Rabbit pAb

For Research Use Only. Not for Use in Diagnostic Procedures.

[Antibody](#) | [ELISA Kits](#) | [Protein](#) | [Reagents](#)