

SC23A Rabbit pAb

CatalogNo: YN3350

| Key Features

Host Species

- Rabbit

Reactivity

- Human, Mouse

Applications

- WB

MW

- 85kD (Observed)

Isotype

- IgG

| Recommended Dilution Ratios

WB 1:500-2000

| Storage

Storage*

-15°C to -25°C/1 year(Do not lower than -25°C)

Formulation

Liquid in PBS containing 50% glycerol, 0.5% BSA and 0.02% sodium azide.

| Basic Information

Clonality

Polyclonal

| Immunogen Information

Immunogen

Synthesized peptide derived from human SC23A AA range: 352-402

Specificity

This antibody detects endogenous levels of SC23A at Human/Mouse

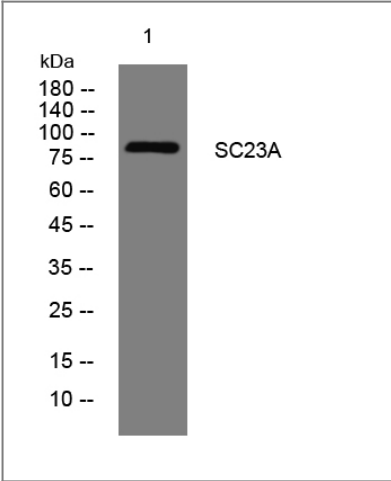
| Target Information

Gene name

SEC23A

Protein Name	SC23A		
	Organism	Gene ID	UniProt ID
	Human	10484;	Q15436;
	Mouse	20334;	Q01405;
Cellular Localization	Cytoplasmic vesicle, COPII-coated vesicle membrane ; Peripheral membrane protein ; Cytoplasmic side . Endoplasmic reticulum membrane ; Peripheral membrane protein ; Cytoplasmic side . Cytoplasm, cytosol . Enriched at endoplasmic reticulum exit sites, also known as transitional endoplasmic reticulum (tER). .		
Tissue specificity	Ubiquitously expressed.		
Function	Disease:Defects in SEC23A are the cause of cranio-lenticulosutural dysplasia (CLSD) [MIM:607812]. Cranio-lenticulo-sutural dysplasia (CLSD) is an autosomal recessive syndrome characterized by late-closing fontanels, sutural cataracts, facial dysmorphisms and skeletal defects.,Function:Component of the COPII coat, that covers ER-derived vesicles involved in transport from the endoplasmic reticulum to the Golgi apparatus. COPII acts in the cytoplasm to promote the transport of secretory, plasma membrane, and vacuolar proteins from the endoplasmic reticulum to the Golgi complex.,similarity:Belongs to the SEC23/SEC24 family. SEC23 subfamily.,subcellular location:In the ribosome-free transitional face of the ER and associated vesicles.,subunit:COPII is composed of at least five proteins: the Sec23/24 complex, the Sec13/31 complex and Sar1. Interacts with SEC23IP. Interacts with HTR4 (By similarity). Interacts with SEC16A.,		

Validation Data



Western blot analysis of lysates from K562 cells, primary antibody was diluted at 1:1000, 4°over night

Contact information

Orders: order.cn@immunoway.com
Support: support.cn@immunoway.com
Telephone: 400-8787-807(China)
Website: <http://www.immunoway.com.cn>
Address: 2200 Ringwood Ave San Jose, CA 95131 USA



Please scan the QR code
to access additional
product information:
SC23A Rabbit pAb

For Research Use Only. Not for Use in Diagnostic Procedures.

[Antibody](#) | [ELISA Kits](#) | [Protein](#) | [Reagents](#)