

## CEP85 Rabbit pAb

CatalogNo: YN3337

### | Key Features

#### Host Species

- Rabbit

#### Reactivity

- Human, Mouse

#### Applications

- WB

#### MW

- 85kD (Observed)

#### Isotype

- IgG

### | Recommended Dilution Ratios

WB 1:500-2000

### | Storage

**Storage\*** -15°C to -25°C/1 year (Do not lower than -25°C)

**Formulation** Liquid in PBS containing 50% glycerol, 0.5% BSA and 0.02% sodium azide.

### | Basic Information

**Clonality** Polyclonal

### | Immunogen Information

**Immunogen** Synthesized peptide derived from human CEP85 AA range: 267-317

**Specificity** This antibody detects endogenous levels of CEP85 at Human/Mouse

### | Target Information

**Gene name** CEP85 CCDC21

**Protein Name** CEP85

Organism	Gene ID	UniProt ID
Human	<a href="#">64793;</a>	<a href="#">Q6P2H3;</a>
Mouse	<a href="#">70012;</a>	<a href="#">Q8BMK0;</a>

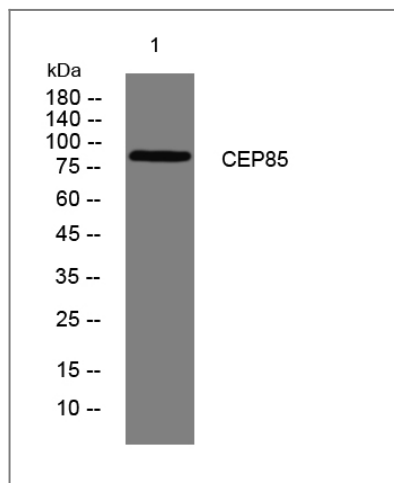
**Cellular  
Localization**

Cytoplasm, cytoskeleton, microtubule organizing center, centrosome . Cytoplasm, cytoskeleton, spindle pole . Nucleus, nucleolus . Localizes to centrosomes and nucleolus in interphase. Upon entry into mitosis, relocates from nucleolus and accumulates at spindle poles (PubMed:21399614). Associated with the pericentriolar material. Localizes to centrosomes at a low level in G1 phase and a slightly increased level in S phase, with gradually elevated levels during G2 phase. The levels at centrosomes further increase at G2/M, reaching a peak at spindle poles at early mitotic stages and remain high until the end of anaphase (PubMed:26220856). .

**Tissue specificity** Hepatoma,Placenta,Retinoblastoma,Testis,

**Function** similarity:Belongs to the CCDC21 family.,

## Validation Data



Western blot analysis of lysates from A549 cells, primary antibody was diluted at 1:1000, 4° over night

## Contact information

Orders: order.cn@immunoway.com  
Support: support.cn@immunoway.com  
Telephone: 400-8787-807(China)  
Website: <http://www.immunoway.com.cn>  
Address: 2200 Ringwood Ave San Jose, CA 95131 USA



Please scan the QR code to access additional product information:  
**CEP85 Rabbit pAb**

