

## ZN711 Rabbit pAb

CatalogNo: YN3336

### | Key Features

#### Host Species

- Rabbit

#### Reactivity

- Human, Mouse

#### Applications

- WB

#### MW

- 85kD (Observed)

#### Isotype

- IgG

### | Recommended Dilution Ratios

WB 1:500-2000

### | Storage

**Storage\*** -15°C to -25°C/1 year (Do not lower than -25°C)

**Formulation** Liquid in PBS containing 50% glycerol, 0.5% BSA and 0.02% sodium azide.

### | Basic Information

**Clonality** Polyclonal

### | Immunogen Information

**Immunogen** Synthesized peptide derived from human ZN711 AA range: 438-488

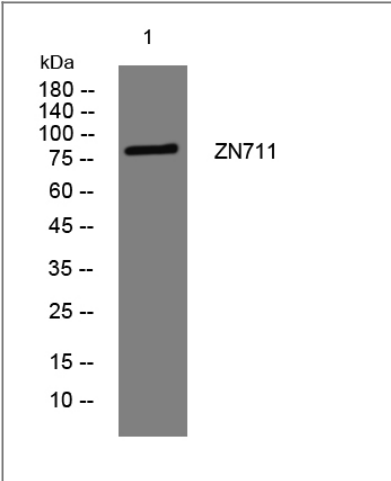
**Specificity** This antibody detects endogenous levels of ZN711 at Human/Mouse

### | Target Information

**Gene name** ZNF711 CMPX1 ZNF6

<b>Protein Name</b>	ZN711		
	<b>Organism</b>	<b>Gene ID</b>	<b>UniProt ID</b>
	Human	<a href="#">7552;</a>	<a href="#">Q9Y462;</a>
	Mouse		<a href="#">A2ANX9;</a>
<b>Cellular Localization</b>	Nucleus .		
<b>Tissue specificity</b>	Expressed in neural tissues.		
<b>Function</b>	Function:May be involved in transcriptional regulation.,PTM:Phosphorylated upon DNA damage, probably by ATM or ATR.,similarity:Belongs to the krueppel C2H2-type zinc-finger protein family.,similarity:Contains 11 C2H2-type zinc fingers.,		

| Validation Data



Western blot analysis of lysates from MCF-7 cells, primary antibody was diluted at 1:1000, 4°over night

| Contact information

Orders:

order.cn@immunoway.com

Support:

support.cn@immunoway.com

Telephone:

400-8787-807(China)

Website:

http://www.immunoway.com.cn

Address:

2200 Ringwood Ave San Jose, CA 95131 USA



Please scan the QR code to access additional product information:  
**ZN711 Rabbit pAb**