

SKOR1 Rabbit pAb

CatalogNo: YN3314

Key Features

Host Species

- Rabbit

Reactivity

- Human, Mouse, Rat

Applications

- WB

MW

- 105kD (Observed)

Isotype

- IgG

Storage

Storage* -15°C to -25°C/1 year (Do not lower than -25°C)

Formulation Liquid in PBS containing 50% glycerol, 0.5% BSA and 0.02% sodium azide.

Recommended Dilution Ratios

WB 1:500-2000

Basic Information

Clonality Polyclonal

Immunogen Information

Immunogen Synthesized peptide derived from human SKOR1 AA range: 322-372

Specificity This antibody detects endogenous levels of SKOR1 at Human/Mouse/Rat

Target Information

Gene name SKOR1 CORL1 FUSSEL15 LBXCOR1

Protein Name SKOR1

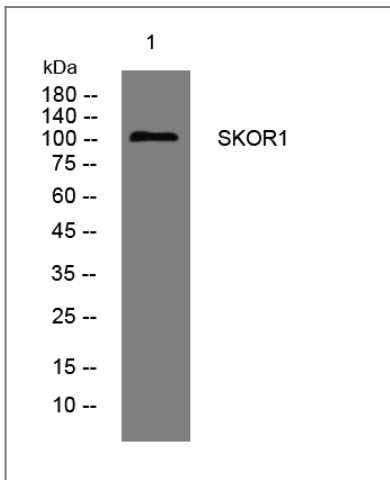
Organism	Gene ID	UniProt ID
Human	390598 ;	P84550 ;
Mouse	207667 ;	Q8BX46 ;
Rat	315748 ;	P84551 ;

Cellular Localization Nucleus .

Tissue specificity Present specifically in cerebellar Purkinje cells (at protein level).

Function Caution:The sequence shown here is derived from an Ensembl automatic analysis pipeline and should be considered as preliminary data.,Function:Acts as a transcriptional corepressor of LBX1 (By similarity). Inhibits BMP signaling.,similarity:Belongs to the SKI family.,subunit:Interacts with LBX1 (By similarity). Interacts with SMAD1, SMAD2 and SMAD3.,tissue specificity:Present specifically in cerebellar Purkinje cells (at protein level).

Validation Data



Western blot analysis of lysates from KB cells, primary antibody was diluted at 1:1000, 4° over night

Contact information

Orders: order.cn@immunoway.com
Support: support.cn@immunoway.com
Telephone: 400-8787-807(China)
Website: <http://www.immunoway.com.cn>
Address: 2200 Ringwood Ave San Jose, CA 95131 USA



Please scan the QR code to access additional product information:
SKOR1 Rabbit pAb

