

IQEC1 Rabbit pAb

CatalogNo: YN3306

Key Features

Host Species

- Rabbit

Reactivity

- Human, Mouse

Applications

- WB

MW

- 105kD (Observed)

Isotype

- IgG

Recommended Dilution Ratios

WB 1:500-2000

Storage

Storage* -15°C to -25°C/1 year (Do not lower than -25°C)

Formulation Liquid in PBS containing 50% glycerol, 0.5% BSA and 0.02% sodium azide.

Basic Information

Clonality Polyclonal

Immunogen Information

Immunogen Synthesized peptide derived from human IQEC1 AA range: 693-743

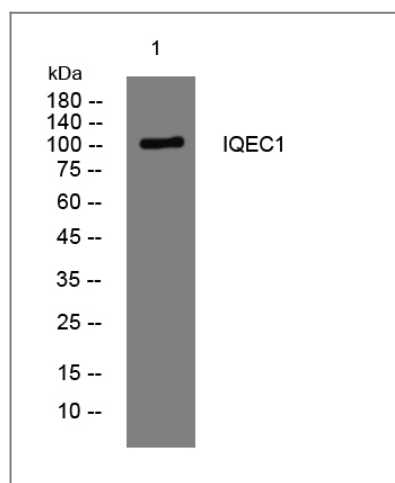
Specificity This antibody detects endogenous levels of IQEC1 at Human/Mouse

Target Information

Gene name IQSEC1 ARFGEP100 BRAG2 KIAA0763

Protein Name	IQEC1		
	Organism	Gene ID	UniProt ID
	Human	9922;	Q6DN90;
	Mouse	232227;	Q8R0S2;
Cellular Localization	Cytoplasm . Nucleus . Cell junction, synapse, postsynaptic density . Cytoplasmic vesicle, secretory vesicle, synaptic vesicle . At steady state, may be preferentially cytosolic.		
Tissue specificity	Expressed in brain, ovary, heart, lung, liver, kidney and leukocytes. Moderate expression was also detected in lung, skeletal muscle, placenta, small intestine, pancreas, spleen and testis.		
Function	Function:In addition to accelerate GTP gamma S binding by ARFs of all three classes, it appears to function preferentially as a guanine nucleotide exchange protein for ARF6, mediating internalisation of beta-1 integrin.,similarity:Belongs to the BRAG family.,similarity:Contains 1 IQ domain.,similarity:Contains 1 PH domain.,similarity:Contains 1 SEC7 domain.,subcellular location:At steady state, may be preferentially cytosolic.,subunit:Interacts with ARF6.,tissue specificity:Expressed in brain, ovary, heart, lung, liver, kidney and leukocytes. Moderate expression was also detected in lung, skeletal muscle, placenta, small intestine, pancreas, spleen and testis.,		

Validation Data



Western blot analysis of lysates from HCT116 cells, primary antibody was diluted at 1:1000, 4° over night

Contact information

Orders: order.cn@immunoway.com
 Support: support.cn@immunoway.com
 Telephone: 400-8787-807(China)
 Website: <http://www.immunoway.com.cn>
 Address: 2200 Ringwood Ave San Jose, CA 95131 USA



Please scan the QR code to access additional product information:
IQEC1 Rabbit pAb

