

## XPOT Rabbit pAb

CatalogNo: YN3302

### | Key Features

#### Host Species

- Rabbit

#### Reactivity

- Human, Mouse

#### Applications

- WB

#### MW

- 105kD (Observed)

#### Isotype

- IgG

### | Recommended Dilution Ratios

WB 1:500-2000

### | Storage

**Storage\*** -15°C to -25°C/1 year (Do not lower than -25°C)

**Formulation** Liquid in PBS containing 50% glycerol, 0.5% BSA and 0.02% sodium azide.

### | Basic Information

**Clonality** Polyclonal

### | Immunogen Information

**Immunogen** Synthesized peptide derived from human XPOT AA range: 135-185

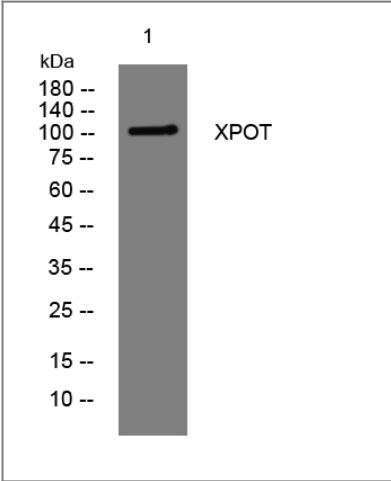
**Specificity** This antibody detects endogenous levels of XPOT at Human/Mouse

### | Target Information

**Gene name** XPOT

<b>Protein Name</b>	XPOT		
	<b>Organism</b>	<b>Gene ID</b>	<b>UniProt ID</b>
	Human	<a href="#">11260</a> ;	<a href="#">O43592</a> ;
	Mouse		<a href="#">Q9CRT8</a> ;
<b>Cellular Localization</b>	Nucleus. Cytoplasm. Nuclear, once bound to tRNA and Ran the complex translocates to the cytoplasm. Shuttles between the nucleus and the cytoplasm.		
<b>Tissue specificity</b>	B-cell lymphoma,Cervix carcinoma,Lymph,Placenta,		
<b>Function</b>	<p>Function:Mediates the nuclear export of aminoacylated tRNAs. In the nucleus binds to tRNA and to the GTPase Ran in its active GTP-bound form. Docking of this trimeric complex to the nuclear pore complex (NPC) is mediated through binding to nucleoporins. Upon transit of a nuclear export complex into the cytoplasm, disassembling of the complex and hydrolysis of Ran-GTP to Ran-GDP (induced by RANBP1 and RANGAP1, respectively) cause release of the tRNA from the export receptor. XPOT then return to the nuclear compartment and mediate another round of transport. The directionality of nuclear export is thought to be conferred by an asymmetric distribution of the GTP- and GDP-bound forms of Ran between the cytoplasm and nucleus.,similarity:Belongs to the exportin family.,subcellular location:Nuclear, once bound to tRNA and Ran the complex translocates to the cytoplasm. Shuttles between the nucleus and the cytoplasm.,subunit:Found in a complex with XPOT, Ran and tRNA. Probably found in a complex with nucleoporins. Interacts with Ran and tRNA in a GTP-dependent manner.,</p>		

| Validation Data



Western blot analysis of lysates from Hela cells, primary antibody was diluted at 1:1000, 4°over night

| Contact information

Orders: order.cn@immunoway.com  
Support: support.cn@immunoway.com  
Telephone: 400-8787-807(China)  
Website: <http://www.immunoway.com.cn>  
Address: 2200 Ringwood Ave San Jose, CA 95131 USA



Please scan the QR code  
to access additional  
product information:  
**XPOT Rabbit pAb**

---

For Research Use Only. Not for Use in Diagnostic Procedures.

[Antibody](#) | [ELISA Kits](#) | [Protein](#) | [Reagents](#)