

LONM Rabbit pAb

CatalogNo: YN3293

| Key Features

Host Species

- Rabbit

Reactivity

- Human, Mouse, Rat

Applications

- WB

MW

- 105kD (Observed)

Isotype

- IgG

| Recommended Dilution Ratios

WB 1:500-2000

| Storage

Storage* -15°C to -25°C/1 year (Do not lower than -25°C)

Formulation Liquid in PBS containing 50% glycerol, 0.5% BSA and 0.02% sodium azide.

| Basic Information

Clonality Polyclonal

| Immunogen Information

Immunogen Synthesized peptide derived from human LONM AA range: 398-448

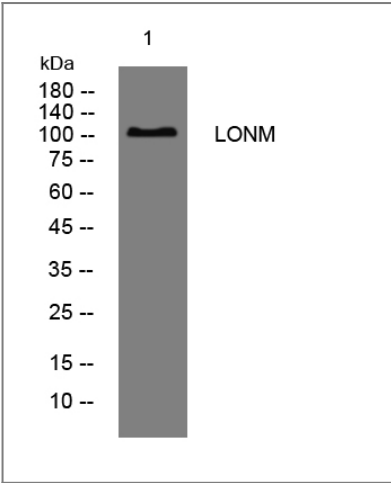
Specificity This antibody detects endogenous levels of LONM at Human/Mouse/Rat

| Target Information

Gene name LONP1 PRSS15

Protein Name	LONM		
	Organism	Gene ID	UniProt ID
	Human	9361 ;	P36776 ;
	Mouse	74142 ;	Q8CGK3 ;
	Rat	170916 ;	Q924S5 ;
Cellular Localization	Mitochondrion matrix .		
Tissue specificity	Duodenum, heart, lung and liver, but not thymus.		
Function	Function:Required for intramitochondrial proteolysis. Catalyzes the initial steps of protein degradation. Hydrolyzes ATP and degrades protein and peptide substrates in an ATP-dependent manner. Binds to single-stranded but not to double-stranded DNA.,similarity:Belongs to the peptidase S16 family.,similarity:Contains 1 Lon domain.,tissue specificity:Duodenum, heart, lung and liver, but not thymus.,		

| Validation Data



Western blot analysis of lysates from PC-12 cells, primary antibody was diluted at 1:1000, 4°over night

| Contact information

Orders:

order.cn@immunoway.com

Support:

support.cn@immunoway.com

Telephone:

400-8787-807(China)

Website:

http://www.immunoway.com.cn

Address:

2200 Ringwood Ave San Jose, CA 95131 USA



Please scan the QR code to access additional product information:
LONM Rabbit pAb

