

## POK6 Rabbit pAb

CatalogNo: YN3285

### Key Features

#### Host Species

- Rabbit

#### Reactivity

- Human

#### Applications

- WB

#### MW

- 105kD (Observed)

#### Isotype

- IgG

### Recommended Dilution Ratios

WB 1:500-2000

### Storage

**Storage\*** -15°C to -25°C/1 year(Do not lower than -25°C)

**Formulation** Liquid in PBS containing 50% glycerol, 0.5% BSA and 0.02% sodium azide.

### Basic Information

**Clonality** Polyclonal

### Immunogen Information

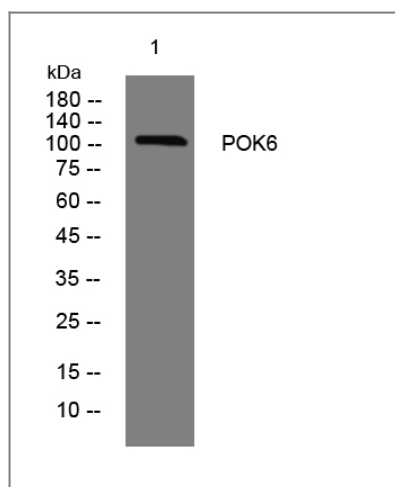
**Immunogen** Synthesized peptide derived from human POK6 AA range: 691-741

**Specificity** This antibody detects endogenous levels of POK6 at Human

### Target Information

<b>Protein Name</b>	POK6		
	<b>Organism</b>	<b>Gene ID</b>	<b>UniProt ID</b>
	Human		<a href="#">P63133</a> ;
<b>Cellular Localization</b>	plasma membrane,integral component of membrane,viral capsid,viral envelope,		

## Validation Data



Western blot analysis of lysates from U2OS cells, primary antibody was diluted at 1:1000, 4°over night

## Contact information

Orders: order.cn@immunoway.com  
 Support: support.cn@immunoway.com  
 Telephone: 400-8787-807(China)  
 Website: <http://www.immunoway.com.cn>  
 Address: 2200 Ringwood Ave San Jose, CA 95131 USA



Please scan the QR code to access additional product information:  
**POK6 Rabbit pAb**

For Research Use Only. Not for Use in Diagnostic Procedures.

[Antibody](#) | [ELISA Kits](#) | [Protein](#) | [Reagents](#)