

## NOD1 Rabbit pAb

CatalogNo: YN3266

### Key Features

#### Host Species

- Rabbit

#### Reactivity

- Human, Mouse

#### Applications

- WB

#### MW

- 105kD (Observed)

#### Isotype

- IgG

### Recommended Dilution Ratios

WB 1:500-2000

### Storage

**Storage\*** -15°C to -25°C/1 year (Do not lower than -25°C)

**Formulation** Liquid in PBS containing 50% glycerol, 0.5% BSA and 0.02% sodium azide.

### Basic Information

**Clonality** Polyclonal

### Immunogen Information

**Immunogen** Synthesized peptide derived from human NOD1 AA range: 290-340

**Specificity** This antibody detects endogenous levels of NOD1 at Human/Mouse

### Target Information

**Gene name** NOD1 CARD4

**Protein Name** NOD1

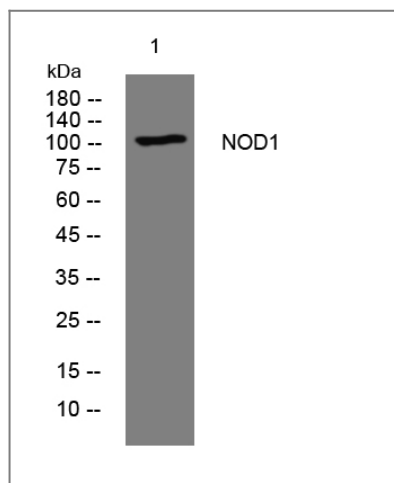
Organism	Gene ID	UniProt ID
Human	<a href="#">10392;</a>	<a href="#">Q9Y239;</a>
Mouse	<a href="#">107607;</a>	<a href="#">Q8BHB0;</a>

**Cellular Localization** Cytoplasm. Cell membrane . Apical cell membrane. Basolateral cell membrane. Detected in the cytoplasm and at the cell membrane. Following bacterial infection, localizes to bacterial entry sites in the cell membrane. Recruited to the basolateral and apical membranes in polarized epithelial cells.

**Tissue specificity** Highly expressed in adult heart, skeletal muscle, pancreas, spleen and ovary. Also detected in placenta, lung, liver, kidney, thymus, testis, small intestine and colon.

**Function** Function:Enhances caspase-9-mediated apoptosis. Induces NF-kappa-B activity via RIPK2 and IKK-gamma. Confers responsiveness to intracellular bacterial lipopolysaccharides (LPS).,similarity:Contains 1 CARD domain.,similarity:Contains 1 NACHT domain.,similarity:Contains 9 LRR (leucine-rich) repeats.,subunit:Self-associates. Binds to caspase-9 and RIPK2 by CARD-CARD interaction.,tissue specificity:Highly expressed in adult heart, skeletal muscle, pancreas, spleen and ovary. Also detected in placenta, lung, liver, kidney, thymus, testis, small intestine and colon.,

## Validation Data



Western blot analysis of lysates from THP-1 cells, primary antibody was diluted at 1:1000, 4° over night

## Contact information

Orders: order.cn@immunoway.com  
Support: support.cn@immunoway.com  
Telephone: 400-8787-807(China)  
Website: <http://www.immunoway.com.cn>  
Address: 2200 Ringwood Ave San Jose, CA 95131 USA



Please scan the QR code to access additional product information:  
**NOD1 Rabbit pAb**

