

PCDA1 Rabbit pAb

CatalogNo: YN3252

Key Features

Host Species

- Rabbit

Reactivity

- Human

Applications

- WB

MW

- 105kD (Observed)

Isotype

- IgG

Recommended Dilution Ratios

WB 1:500-2000

Storage

Storage* -15°C to -25°C/1 year(Do not lower than -25°C)

Formulation Liquid in PBS containing 50% glycerol, 0.5% BSA and 0.02% sodium azide.

Basic Information

Clonality Polyclonal

Immunogen Information

Immunogen Synthesized peptide derived from human PCDA1 AA range: 102-152

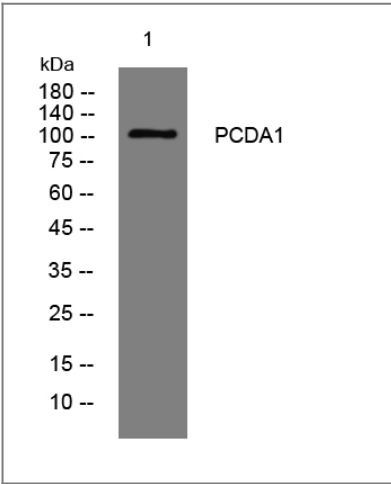
Specificity This antibody detects endogenous levels of PCDA1 at Human

Target Information

Gene name PCDHA1

Protein Name	PCDA1		
	Organism	Gene ID	UniProt ID
	Human	56147;	Q9Y5I3;
Cellular Localization	[Isoform 1]: Cell membrane ; Single-pass type I membrane protein .; [Isoform 2]: Secreted .		
Tissue specificity	Brain,Lung,		
Function	Alternative products:Additional isoforms seem to exist,Function:Potential calcium-dependent cell-adhesion protein. May be involved in the establishment and maintenance of specific neuronal connections in the brain.,similarity:Contains 6 cadherin domains.,subunit:Interacts with FYN.,		

| Validation Data



Western blot analysis of lysates from A431 cells, primary antibody was diluted at 1:1000, 4°over night

| Contact information

Orders: order.cn@immunoway.com
 Support: support.cn@immunoway.com
 Telephone: 400-8787-807(China)
 Website: http://www.immunoway.com.cn
 Address: 2200 Ringwood Ave San Jose, CA 95131 USA



Please scan the QR code
 to access additional
 product information:
PCDA1 Rabbit pAb