

## ZN268 Rabbit pAb

CatalogNo: YN3238

### | Key Features

#### Host Species

- Rabbit

#### Reactivity

- Human

#### Applications

- WB

#### MW

- 105kD (Observed)

#### Isotype

- IgG

### | Recommended Dilution Ratios

WB 1:500-2000

### | Storage

**Storage\*** -15°C to -25°C/1 year(Do not lower than -25°C)

**Formulation** Liquid in PBS containing 50% glycerol, 0.5% BSA and 0.02% sodium azide.

### | Basic Information

**Clonality** Polyclonal

### | Immunogen Information

**Immunogen** Synthesized peptide derived from human ZN268 AA range: 201-251

**Specificity** This antibody detects endogenous levels of ZN268 at Human

### | Target Information

**Gene name** ZNF268

**Protein Name** ZN268

**Organism**

Human

**Gene ID**

[10795;](#)

**UniProt ID**

[Q14587;](#)

**Cellular  
Localization**

[Isoform 1]: Nucleus .; [Isoform 2]: Nucleus . Cytoplasm .

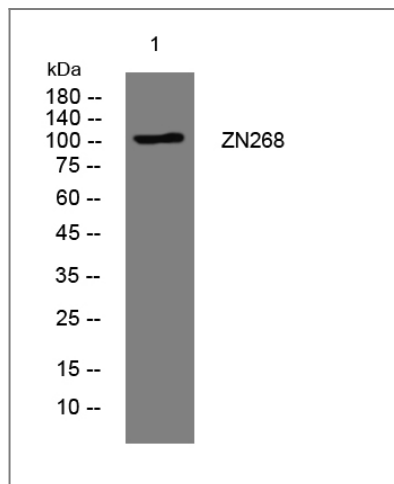
**Tissue specificity**

Overexpressed in ovarian cancer tissues compared to normal ovarian tissues. Isoform 1 and isoform 2 are expressed in squamous epithelium tissues. Isoform 2 is overexpressed in squamous cervical cancer (at protein level). Expressed in blood cells. Isoform 1 is expressed in pancreas, lung, skeletal muscle, heart, placenta, liver, kidney and brain. Isoform 2 is expressed in chronic lymphocytic leukemia (CLL) and several tumor cell lines. Isoform 3 is expressed in several tumor cells. Isoform 5 is expressed in fetal liver and several tumor cells. Isoform 6 is weakly expressed in brain, lung and small intestine and in several tumor cells. Isoform 7 is expressed in fetal liver and several tumor cells.

**Function**

developmental stage:Highly expressed in 3- to 5-week-old embryos.,Function:May be involved in transcriptional regulation.,similarity:Belongs to the krueppel C2H2-type zinc-finger protein family.,similarity:Contains 1 KRAB domain.,similarity:Contains 24 C2H2-type zinc fingers.,

## Validation Data



Western blot analysis of lysates from AD293 cells, primary antibody was diluted at 1:1000, 4° over night

## Contact information

Orders: [order.cn@immunoway.com](mailto:order.cn@immunoway.com)  
Support: [support.cn@immunoway.com](mailto:support.cn@immunoway.com)  
Telephone: 400-8787-807(China)  
Website: <http://www.immunoway.com.cn>  
Address: 2200 Ringwood Ave San Jose, CA 95131 USA



Please scan the QR code to access additional product information:  
**ZN268 Rabbit pAb**

