

GALT2 Rabbit pAb

CatalogNo: YN3236

Key Features

Host Species

- Rabbit

Reactivity

- Human, Mouse

Applications

- WB

MW

- 65kD (Observed)

Isotype

- IgG

Recommended Dilution Ratios

WB 1:500-2000

Storage

Storage*

-15°C to -25°C/1 year (Do not lower than -25°C)

Formulation

Liquid in PBS containing 50% glycerol, 0.5% BSA and 0.02% sodium azide.

Basic Information

Clonality

Polyclonal

Immunogen Information

Immunogen

Synthesized peptide derived from human GALT2 AA range: 30-80

Specificity

This antibody detects endogenous levels of GALT2 at Human/Mouse

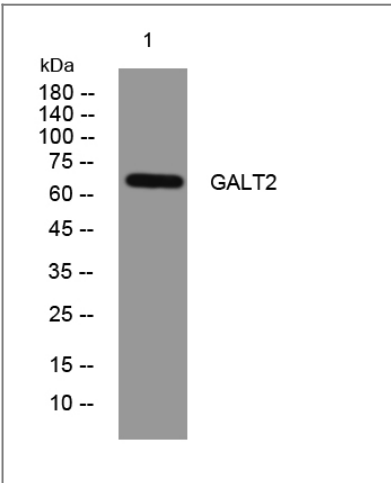
Target Information

Gene name

GALNT2

Protein Name	GALT2		
	Organism	Gene ID	UniProt ID
	Human	2590;	Q10471;
	Mouse	108148;	Q6PB93;
Cellular Localization	Golgi apparatus, Golgi stack membrane ; Single-pass type II membrane protein . Secreted . Resides preferentially in the trans and medial parts of the Golgi stack. A secreted form also exists.		
Tissue specificity	Widely expressed.		
Function	Catalytic activity:UDP-N-acetyl-D-galactosamine + polypeptide = UDP + N-acetyl-D-galactosaminyl-polypeptide.,cofactor:Calcium.,cofactor:Manganese.,Domain:The ricin B-type lectin domain binds to GalNAc and contributes to the glycopeptide specificity.,Domain:There are two conserved domains in the glycosyltransferase region: the N-terminal domain (domain A, also called GT1 motif), which is probably involved in manganese coordination and substrate binding and the C-terminal domain (domain B, also called Gal/GalNAc-T motif), which is probably involved in catalytic reaction and UDP-Gal binding.,Function:Catalyzes the initial reaction in O-linked oligosaccharide biosynthesis, the transfer of an N-acetyl-D-galactosamine residue to a serine or threonine residue on the protein receptor. Has a broad spectrum of substrates for peptides such as EA2, Muc5AC, Muc1a, Muc1b. Probably involved in O-linked glycosylation of the immunoglobulin A1 (IgA1) hinge region.,online information:GlycoGene database,online information:Polypeptide N-acetylgalactosaminyltransferase 2,pathway:Protein modification; protein glycosylation.,similarity:Belongs to the glycosyltransferase 2 family. GalNAc-T subfamily.,similarity:Contains 1 ricin B-type lectin domain.,subcellular location:Resides preferentially in the trans and medial parts of the Golgi stack. A secreted form also exists.,tissue specificity:Widely expressed.,		

| Validation Data



Western blot analysis of lysates from MCF-7 cells, primary antibody was diluted at 1:1000, 4°over night

| Contact information

Orders: order.cn@immunoway.com
Support: support.cn@immunoway.com
Telephone: 400-8787-807(China)
Website: <http://www.immunoway.com.cn>
Address: 2200 Ringwood Ave San Jose, CA 95131 USA



Please scan the QR code
to access additional
product information:
GALT2 Rabbit pAb

For Research Use Only. Not for Use in Diagnostic Procedures.

[Antibody](#) | [ELISA Kits](#) | [Protein](#) | [Reagents](#)