

IL1AP Rabbit pAb

CatalogNo: YN3225

| Key Features

Host Species

- Rabbit

Reactivity

- Human, Mouse, Rat

Applications

- WB

MW

- 65kD (Observed)

Isotype

- IgG

| Recommended Dilution Ratios

WB 1:500-2000

| Storage

Storage*

-15°C to -25°C/1 year (Do not lower than -25°C)

Formulation

Liquid in PBS containing 50% glycerol, 0.5% BSA and 0.02% sodium azide.

| Basic Information

Clonality

Polyclonal

| Immunogen Information

Immunogen

Synthesized peptide derived from human IL1AP AA range: 213-263

Specificity

This antibody detects endogenous levels of IL1AP at Human/Mouse/Rat

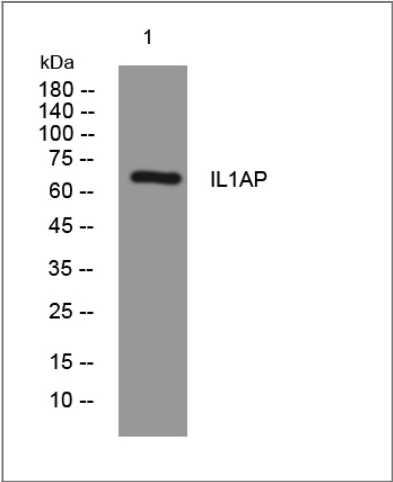
| Target Information

Gene name

IL1RAP C3orf13 IL1R3

Protein Name	IL1AP		
	Organism	Gene ID	UniProt ID
	Human	3556;	Q9NPH3;
	Mouse	16180;	Q61730;
	Rat	25466;	Q63621;
Cellular Localization	[Isoform 1]: Cell membrane; Single-pass type I membrane protein.; [Isoform 2]: Secreted.; [Isoform 3]: Secreted.		
Tissue specificity	Detected in liver, skin, placenta, thymus and lung. Isoform 4 is predominantly expressed in brain. Overexpressed on candidate chronic myeloid leukemia (CML) stem cells, hematopoietic stem cells and mononuclear cells of patients with acute myeloid leukemia (AML). Overexpressed in patients with chronic obstructive pulmonary disease (COPD). Expressed in T-helper 1 (Th1) and T-helper 2 (Th2) cell subsets (PubMed:10653850).		
Function	Function:Mediates interleukin-1-dependent activation of NF-kappa-B. Isoform 1 is part of the membrane-bound form of the IL-1 receptor. Signaling involves formation of a ternary complex containing IL1R1, TOLLIP, MYD88, and IRAK1 or IRAK2. Isoform 2 modulates the response to interleukins by associating with soluble IL1R1 and enhancing interleukin-binding to the decoy receptor.,induction:Phorbol ester treatment causes down-regulation of isoform 1 and induction of isoform 2.,similarity:Belongs to the interleukin-1 receptor family.,similarity:Contains 1 TIR domain.,similarity:Contains 3 Ig-like C2-type (immunoglobulin-like) domains.,tissue specificity:Detected in liver, skin, placenta, thymus and lung.,		

Validation Data



Western blot analysis of lysates from HpeG2 cells, primary antibody was diluted at 1:1000, 4°over night

Contact information

Orders: order.cn@immunoway.com
Support: support.cn@immunoway.com
Telephone: 400-8787-807(China)
Website: <http://www.immunoway.com.cn>
Address: 2200 Ringwood Ave San Jose, CA 95131 USA



Please scan the QR code
to access additional
product information:
IL1AP Rabbit pAb

For Research Use Only. Not for Use in Diagnostic Procedures.

[Antibody](#) | [ELISA Kits](#) | [Protein](#) | [Reagents](#)