

## ZN675 Rabbit pAb

CatalogNo: YN3204

### Key Features

#### Host Species

- Rabbit

#### Reactivity

- Human

#### Applications

- WB

#### MW

- 60kD (Observed)

#### Isotype

- IgG

### Recommended Dilution Ratios

WB 1:500-2000

### Storage

#### Storage\*

-15°C to -25°C/1 year(Do not lower than -25°C)

#### Formulation

Liquid in PBS containing 50% glycerol, 0.5% BSA and 0.02% sodium azide.

### Basic Information

#### Clonality

Polyclonal

### Immunogen Information

#### Immunogen

Synthesized peptide derived from human ZN675 AA range: 66-116

#### Specificity

This antibody detects endogenous levels of ZN675 at Human

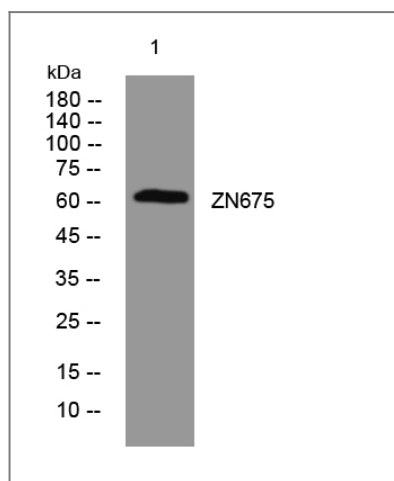
### Target Information

#### Gene name

ZN675 TIZ

<b>Protein Name</b>	ZN675		
	<b>Organism</b>	<b>Gene ID</b>	<b>UniProt ID</b>
	Human	<a href="#">171392;</a>	<a href="#">Q8TD23;</a>
<b>Cellular Localization</b>	Nucleus .		
<b>Tissue specificity</b>	Spleen,Thymus,		
<b>Function</b>	Function:May be involved in transcriptional regulation. May play a role during osteoclast differentiation by modulating TRAF6 signaling activity.,similarity:Contains 1 KRAB domain.,similarity:Contains 15 C2H2-type zinc fingers.,subunit:Interacts with TRAF6.,		

## Validation Data



Western blot analysis of lysates from U2OS cells, primary antibody was diluted at 1:1000, 4°over night

## Contact information

Orders: [order.cn@immunoway.com](mailto:order.cn@immunoway.com)  
 Support: [support.cn@immunoway.com](mailto:support.cn@immunoway.com)  
 Telephone: 400-8787-807(China)  
 Website: <http://www.immunoway.com.cn>  
 Address: 2200 Ringwood Ave San Jose, CA 95131 USA



Please scan the QR code to access additional product information:  
**ZN675 Rabbit pAb**