

S13A5 Rabbit pAb

CatalogNo: YN3199

| Key Features

Host Species

- Rabbit

Reactivity

- Human, Mouse, Rat

Applications

- WB

MW

- 60kD (Observed)

Isotype

- IgG

| Recommended Dilution Ratios

WB 1:500-2000

| Storage

Storage*

-15°C to -25°C/1 year(Do not lower than -25°C)

Formulation

Liquid in PBS containing 50% glycerol, 0.5% BSA and 0.02% sodium azide.

| Basic Information

Clonality

Polyclonal

| Immunogen Information

Immunogen

Synthesized peptide derived from human S13A5 AA range: 313-363

Specificity

This antibody detects endogenous levels of S13A5 at Human/Mouse/Rat

| Target Information

Gene name

SLC13A5 NACT

Protein Name S13A5

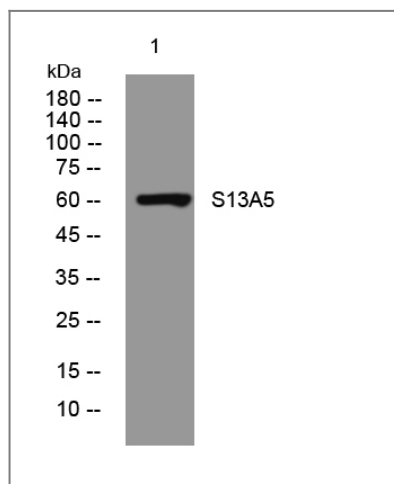
Organism	Gene ID	UniProt ID
Human	284111 ;	Q86YT5 ;
Mouse	237831 ;	Q67BT3 ;
Rat	266998 ;	Q8CJ44 ;

Cellular Localization Cell membrane ; Multi-pass membrane protein .

Tissue specificity Expressed most predominantly in the liver, with moderate expression detectable in the brain and testis.

Function Function:High-affinity sodium/citrate cotransporter that mediates citrate entry into cells. The transport process is electrogenic; it is the trivalent form of citrate rather than the divalent form that is recognized as a substrate. May facilitate the utilization of circulating citrate for the generation of metabolic energy and for the synthesis of fatty acids and cholesterol.,similarity:Belongs to the SLC13A transporter (TC 2.A.47) family. NADC subfamily.,tissue specificity:Expressed most predominantly in the liver, with moderate expression detectable in the brain and testis.,

Validation Data



Western blot analysis of lysates from K562 cells, primary antibody was diluted at 1:1000, 4°over night

Contact information

Orders: order.cn@immunoway.com
Support: support.cn@immunoway.com
Telephone: 400-8787-807(China)
Website: <http://www.immunoway.com.cn>
Address: 2200 Ringwood Ave San Jose, CA 95131 USA



Please scan the QR code to access additional product information:
S13A5 Rabbit pAb

