

## LCTL Rabbit pAb

CatalogNo: YN3185

### | Key Features

#### Host Species

- Rabbit

#### Reactivity

- Human, Mouse

#### Applications

- WB

#### MW

- 60kD (Observed)

#### Isotype

- IgG

### | Recommended Dilution Ratios

WB 1:500-2000

### | Storage

**Storage\*** -15°C to -25°C/1 year(Do not lower than -25°C)

**Formulation** Liquid in PBS containing 50% glycerol, 0.5% BSA and 0.02% sodium azide.

### | Basic Information

**Clonality** Polyclonal

### | Immunogen Information

**Immunogen** Synthesized peptide derived from human LCTL AA range: 450-500

**Specificity** This antibody detects endogenous levels of LCTL at Human/Mouse

### | Target Information

**Gene name** LCTL KLPH UNQ3022/PRO9820

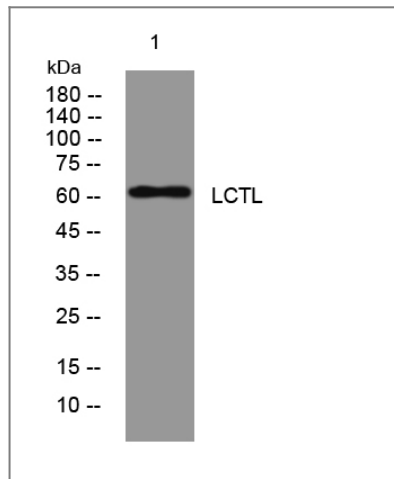
**Protein Name** LCTL

Organism	Gene ID	UniProt ID
Human	<a href="#">197021</a> ;	<a href="#">Q6UWM7</a> ;
Mouse	<a href="#">235435</a> ;	<a href="#">Q8K1F9</a> ;

**Cellular Localization** Endoplasmic reticulum membrane ; Single-pass membrane protein .

**Function** Caution:Probably inactive as a glycosidase since it lacks the essential active site Glu at position 201.,similarity:Belongs to the glycosyl hydrolase 1 family.,similarity:Belongs to the glycosyl hydrolase 1 family. Klotho subfamily.,

## Validation Data



Western blot analysis of lysates from MCF-7 cells, primary antibody was diluted at 1:1000, 4°over night

## Contact information

Orders: order.cn@immunoway.com  
Support: support.cn@immunoway.com  
Telephone: 400-8787-807(China)  
Website: <http://www.immunoway.com.cn>  
Address: 2200 Ringwood Ave San Jose, CA 95131 USA



Please scan the QR code to access additional product information:  
**LCTL Rabbit pAb**