

## MUC21 Rabbit pAb

CatalogNo: YN3177

### | Key Features

#### Host Species

- Rabbit

#### Reactivity

- Human

#### Applications

- WB

#### MW

- 60kD (Observed)

#### Isotype

- IgG

### | Recommended Dilution Ratios

WB 1:500-2000

### | Storage

#### Storage\*

-15°C to -25°C/1 year(Do not lower than -25°C)

#### Formulation

Liquid in PBS containing 50% glycerol, 0.5% BSA and 0.02% sodium azide.

### | Basic Information

#### Clonality

Polyclonal

### | Immunogen Information

#### Immunogen

Synthesized peptide derived from human MUC21 AA range: 34-84

#### Specificity

This antibody detects endogenous levels of MUC21 at Human

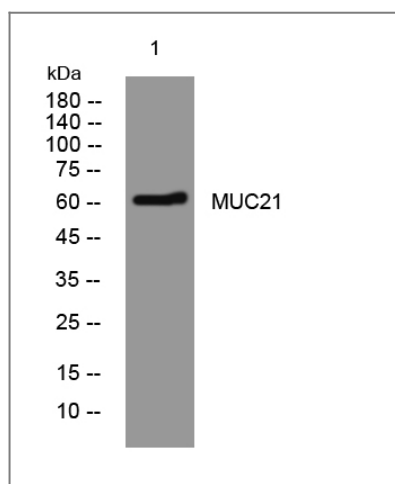
### | Target Information

#### Gene name

MUC21 C6orf205 UNQ697/PRO1342

<b>Protein Name</b>	MUC21		
	<b>Organism</b>	<b>Gene ID</b>	<b>UniProt ID</b>
	Human	<a href="#">394263</a> ;	<a href="#">Q5SSG8</a> ;
<b>Cellular Localization</b>	Cell membrane ; Single-pass type I membrane protein ; Extracellular side .		
<b>Tissue specificity</b>	Expressed in lung, large intestine, thymus, and testis. Expressed in normal and malignant bronchial epithelial cells.		
<b>Function</b>	miscellaneous:Could be considered as a marker for lung carcinomas.,PTM:O-glycosylated.,tissue specificity:Expressed in lung, large intestine, thymus, and testis. Expressed in normal and malignant bronchial epithelial cells.,		

## Validation Data



Western blot analysis of lysates from Jurkat cells, primary antibody was diluted at 1:1000, 4° over night

## Contact information

Orders: [order.cn@immunoway.com](mailto:order.cn@immunoway.com)  
 Support: [support.cn@immunoway.com](mailto:support.cn@immunoway.com)  
 Telephone: 400-8787-807(China)  
 Website: <http://www.immunoway.com.cn>  
 Address: 2200 Ringwood Ave San Jose, CA 95131 USA



Please scan the QR code to access additional product information:  
**MUC21 Rabbit pAb**