

## ZN461 Rabbit pAb

CatalogNo: YN3156

### | Key Features

#### Host Species

- Rabbit

#### Reactivity

- Human

#### Applications

- WB

#### MW

- 60kD (Observed)

#### Isotype

- IgG

### | Recommended Dilution Ratios

WB 1:500-2000

### | Storage

**Storage\*** -15°C to -25°C/1 year(Do not lower than -25°C)

**Formulation** Liquid in PBS containing 50% glycerol, 0.5% BSA and 0.02% sodium azide.

### | Basic Information

**Clonality** Polyclonal

### | Immunogen Information

**Immunogen** Synthesized peptide derived from human ZN461 AA range: 283-333

**Specificity** This antibody detects endogenous levels of ZN461 at Human

### | Target Information

**Gene name** ZNF461 GIOT1

**Protein Name** ZN461

**Organism**

Human

**Gene ID**

[92283](#);

**UniProt ID**

[Q8TAF7](#);

**Cellular  
Localization**

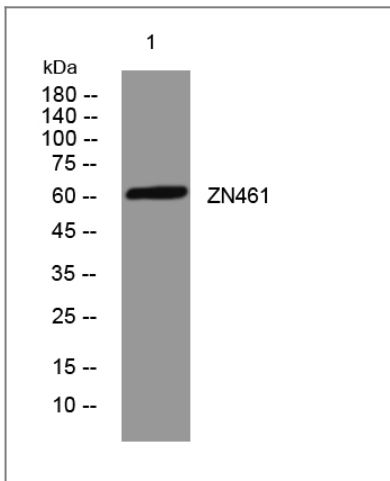
Nucleus .

**Tissue specificity** Widely expressed, with highest levels in liver, kidney, pancreas, thymus, and small intestine.

**Function**

Function:May be involved in transcriptional regulation.,similarity:Belongs to the krueppel C2H2-type zinc-finger protein family.,similarity:Contains 1 KRAB domain.,similarity:Contains 12 C2H2-type zinc fingers.,tissue specificity:Widely expressed, with highest levels in liver, kidney, pancreas, thymus, and small intestine.,

## Validation Data



Western blot analysis of lysates from 293T cells, primary antibody was diluted at 1:1000, 4°over night

## Contact information

Orders: [order.cn@immunoway.com](mailto:order.cn@immunoway.com)  
Support: [support.cn@immunoway.com](mailto:support.cn@immunoway.com)  
Telephone: 400-8787-807(China)  
Website: <http://www.immunoway.com.cn>  
Address: 2200 Ringwood Ave San Jose, CA 95131 USA



Please scan the QR code to access additional product information:  
**ZN461 Rabbit pAb**