

## ARI3B Rabbit pAb

CatalogNo: YN3125

### | Key Features

#### Host Species

- Rabbit

#### Reactivity

- Human, Mouse

#### Applications

- WB

#### MW

- 60kD (Observed)

#### Isotype

- IgG

### | Recommended Dilution Ratios

WB 1:500-2000

### | Storage

**Storage\*** -15°C to -25°C/1 year (Do not lower than -25°C)

**Formulation** Liquid in PBS containing 50% glycerol, 0.5% BSA and 0.02% sodium azide.

### | Basic Information

**Clonality** Polyclonal

### | Immunogen Information

**Immunogen** Synthesized peptide derived from human ARI3B AA range: 459-509

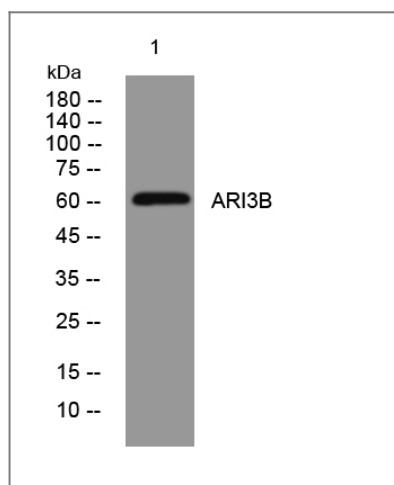
**Specificity** This antibody detects endogenous levels of ARI3B at Human/Mouse

### | Target Information

**Gene name** ARID3B BDP DRIL2

<b>Protein Name</b>	ARI3B		
	<b>Organism</b>	<b>Gene ID</b>	<b>UniProt ID</b>
	Human	<a href="#">10620;</a>	<a href="#">Q8IVW6;</a>
	Mouse	<a href="#">56380;</a>	<a href="#">Q9Z1N7;</a>
<b>Cellular Localization</b>	Nucleus .		
<b>Tissue specificity</b>	Expressed in placenta, testis and leukocytes. Expressed in neuroblastoma. Present in K-562 erythrocytic leukemia cell line (at protein level).		
<b>Function</b>	Function:Transcription factor which may be involved in neuroblastoma growth and malignant transformation. Favors nuclear targeting of ARID3A.,similarity:Contains 1 ARID domain.,subunit:Heterodimer with ARID3A. Interacts with unphosphorylated RB1.,tissue specificity:Expressed in placenta, testis and leukocytes. Expressed in neuroblastoma. Present in K562 erythrocytic leukemia cells (at protein level).,		

## Validation Data



Western blot analysis of lysates from HpeG2 cells, primary antibody was diluted at 1:1000, 4°over night

## Contact information

Orders: [order.cn@immunoway.com](mailto:order.cn@immunoway.com)  
 Support: [support.cn@immunoway.com](mailto:support.cn@immunoway.com)  
 Telephone: 400-8787-807(China)  
 Website: <http://www.immunoway.com.cn>  
 Address: 2200 Ringwood Ave San Jose, CA 95131 USA



Please scan the QR code to access additional product information:  
**ARI3B Rabbit pAb**

