

ZN250 Rabbit pAb

CatalogNo: YN3122

Key Features

Host Species

- Rabbit

Reactivity

- Human, Mouse

Applications

- WB

MW

- 60kD (Observed)

Isotype

- IgG

Storage

Storage* -15°C to -25°C/1 year (Do not lower than -25°C)

Formulation Liquid in PBS containing 50% glycerol, 0.5% BSA and 0.02% sodium azide.

Recommended Dilution Ratios

WB 1:500-2000

Basic Information

Clonality Polyclonal

Immunogen Information

Immunogen Synthesized peptide derived from human ZN250 AA range: 38-88

Specificity This antibody detects endogenous levels of ZN250 at Human/Mouse

Target Information

Gene name ZNF250 ZNF647

Protein Name ZN250

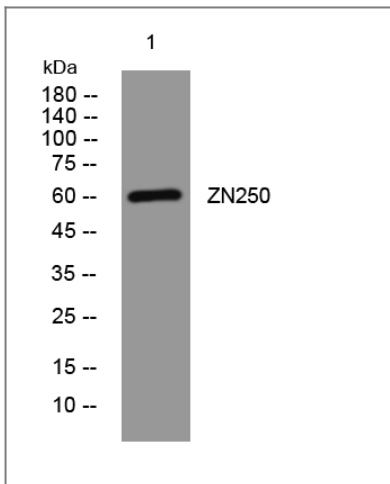
Organism	Gene ID	UniProt ID
Human	58500 ;	P15622 ;
Mouse	239546 ;	Q7TNU6 ;

Cellular Localization Nucleus .

Tissue specificity Brain,Cerebellum,Colon,Skeletal muscle,

Function Function:May be involved in transcriptional regulation.,similarity:Belongs to the krueppel C2H2-type zinc-finger protein family.,similarity:Contains 1 KRAB domain.,similarity:Contains 13 C2H2-type zinc fingers.,

Validation Data



Western blot analysis of lysates from KB cells, primary antibody was diluted at 1:1000, 4°over night

Contact information

Orders: order.cn@immunoway.com
Support: support.cn@immunoway.com
Telephone: 400-8787-807(China)
Website: <http://www.immunoway.com.cn>
Address: 2200 Ringwood Ave San Jose, CA 95131 USA



Please scan the QR code to access additional product information:
ZN250 Rabbit pAb