

OSGI1 Rabbit pAb

CatalogNo: YN3119

Key Features

Host Species

- Rabbit

Reactivity

- Human, Mouse

Applications

- WB

MW

- 60kD (Observed)

Isotype

- IgG

Recommended Dilution Ratios

WB 1:500-2000

Storage

Storage* -15°C to -25°C/1 year (Do not lower than -25°C)

Formulation Liquid in PBS containing 50% glycerol, 0.5% BSA and 0.02% sodium azide.

Basic Information

Clonality Polyclonal

Immunogen Information

Immunogen Synthesized peptide derived from human OSGI1 AA range: 276-326

Specificity This antibody detects endogenous levels of OSGI1 at Human

Target Information

Gene name OSGIN1 OKL38

Protein Name OSG1

Organism

Human

Gene ID

[29948](#);

UniProt ID

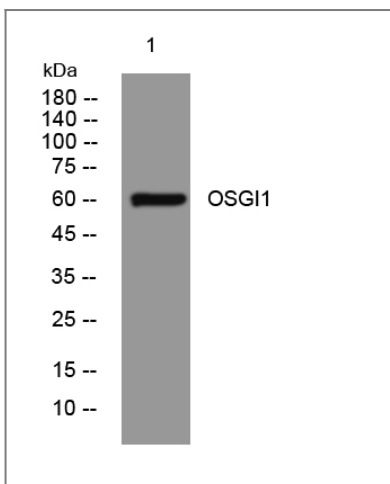
[Q9UJX0](#);

Tissue specificity Ubiquitous. Highest expression in the ovary, testis, kidney, skeletal muscle and liver (PubMed:11459809, PubMed:14570898, PubMed:15569677). Weakly expressed in spleen, heart, kidney, and pancreas (PubMed:15569677). Highly expressed in tumor cells (at protein level) (PubMed:15569677).

Function

Function:Regulates the differentiation and proliferation of normal cells through the regulation of cell death.,induction:By pregnancy.,miscellaneous:Loss of OSGIN1 protein disturbs the balance between cell growth, differentiation, and cell death in normal tissue, resulting in uncontrolled growth and formation of tumors.,similarity:Belongs to the OKL38 family.,tissue specificity:Ubiquitous. Highest expression in the ovary, testis, kidney, and liver.,

Validation Data



Western blot analysis of lysates from HpeG2 cells, primary antibody was diluted at 1:1000, 4° over night

Contact information

Orders: order.cn@immunoway.com
Support: support.cn@immunoway.com
Telephone: 400-8787-807(China)
Website: <http://www.immunoway.com.cn>
Address: 2200 Ringwood Ave San Jose, CA 95131 USA



Please scan the QR code to access additional product information:
OSG1 Rabbit pAb