

## GNAI2 Rabbit pAb

CatalogNo: YN3110

### | Key Features

#### Host Species

- Rabbit

#### Reactivity

- Human, Mouse, Rat

#### Applications

- WB

#### MW

- 38kD (Observed)

#### Isotype

- IgG

### | Recommended Dilution Ratios

WB 1:500-2000

### | Storage

#### Storage\*

-15°C to -25°C/1 year(Do not lower than -25°C)

#### Formulation

Liquid in PBS containing 50% glycerol, 0.5% BSA and 0.02% sodium azide.

### | Basic Information

#### Clonality

Polyclonal

### | Immunogen Information

#### Immunogen

Synthesized peptide derived from human GNAI2 AA range: 274-324

#### Specificity

This antibody detects endogenous levels of GNAI2 at Human/Mouse/Rat

### | Target Information

#### Gene name

GNAI2 GNAI2B

**Protein Name** GNAI2

Organism	Gene ID	UniProt ID
Human	<a href="#">2771</a> ;	<a href="#">P04899</a> ;
Mouse	<a href="#">14678</a> ;	<a href="#">P08752</a> ;
Rat	<a href="#">81664</a> ;	<a href="#">P04897</a> ;

**Cellular Localization**

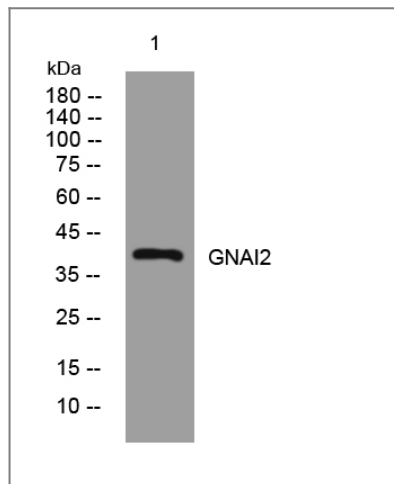
Cytoplasm . Cytoplasm, cytoskeleton, microtubule organizing center, centrosome . Cell membrane . Membrane ; Lipid-anchor . Localizes in the centrosomes of interphase and mitotic cells. Detected at the cleavage furrow and/or the midbody.

**Tissue specificity** Brain,Cerebellum,Kidney,Lung,Mammary gland,Testis,

**Function**

Function:Guanine nucleotide-binding proteins (G proteins) are involved as modulators or transducers in various transmembrane signaling systems. The G(i) proteins are involved in hormonal regulation of adenylate cyclase: they inhibit the cyclase in response to beta-adrenergic stimuli.,similarity:Belongs to the G-alpha family. G(i/o/t/z) subfamily.,subunit:G proteins are composed of 3 units; alpha, beta and gamma. The alpha chain contains the guanine nucleotide binding site. Interacts with GPSM1 (By similarity). Interacts with UNC5B.,

## Validation Data



Western blot analysis of lysates from HpeG2 cells, primary antibody was diluted at 1:1000, 4°over night

## Contact information

Orders: order.cn@immunoway.com  
Support: support.cn@immunoway.com  
Telephone: 400-8787-807(China)  
Website: <http://www.immunoway.com.cn>  
Address: 2200 Ringwood Ave San Jose, CA 95131 USA



Please scan the QR code to access additional product information:  
**GNAI2 Rabbit pAb**

