

## ATX3L Rabbit pAb

CatalogNo: YN3106

### | Key Features

#### Host Species

- Rabbit

#### Reactivity

- Human

#### Applications

- WB

#### MW

- 38kD (Observed)

#### Isotype

- IgG

### | Recommended Dilution Ratios

WB 1:500-2000

### | Storage

**Storage\*** -15°C to -25°C/1 year(Do not lower than -25°C)

**Formulation** Liquid in PBS containing 50% glycerol, 0.5% BSA and 0.02% sodium azide.

### | Basic Information

**Clonality** Polyclonal

### | Immunogen Information

**Immunogen** Synthesized peptide derived from human ATX3L AA range: 99-149

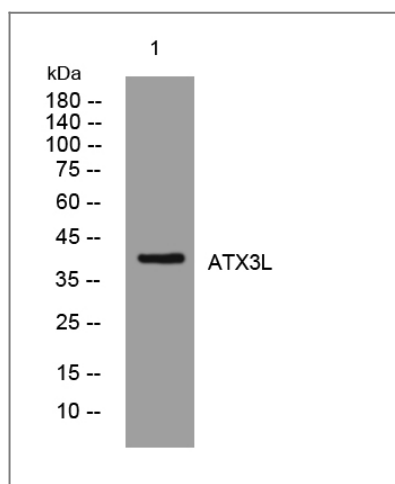
**Specificity** This antibody detects endogenous levels of ATX3L at Human

### | Target Information

**Gene name** ATXN3L ATX3L MJDL

<b>Protein Name</b>	ATX3L		
	<b>Organism</b>	<b>Gene ID</b>	<b>UniProt ID</b>
	Human	<a href="#">92552</a> ;	<a href="#">Q9H3M9</a> ;
<b>Cellular Localization</b>	Nucleus .		
<b>Tissue specificity</b>	Testis,		
<b>Function</b>	Caution:Could be the product of a pseudogene. Suggested by the absence of intron.,Function:May bind to histones and regulate transcription. May act as a deubiquitinating enzyme.,similarity:Contains 1 Josephin domain.,similarity:Contains 2 UIM (ubiquitin-interacting motif) repeats.,		

## Validation Data



Western blot analysis of lysates from SW480 cells, primary antibody was diluted at 1:1000, 4° over night

## Contact information

Orders: [order.cn@immunoway.com](mailto:order.cn@immunoway.com)  
 Support: [support.cn@immunoway.com](mailto:support.cn@immunoway.com)  
 Telephone: 400-8787-807(China)  
 Website: <http://www.immunoway.com.cn>  
 Address: 2200 Ringwood Ave San Jose, CA 95131 USA



Please scan the QR code to access additional product information:  
**ATX3L Rabbit pAb**