

DERL3 Rabbit pAb

CatalogNo: YN3023

Key Features

Host Species

- Rabbit

Reactivity

- Human, Mouse

Applications

- WB, ELISA

MW

- 25kD (Observed)

Isotype

- IgG

Storage

Storage* -15°C to -25°C/1 year (Do not lower than -25°C)

Formulation Liquid in PBS containing 50% glycerol, 0.5% BSA and 0.02% sodium azide.

Recommended Dilution Ratios

WB 1:500-2000

ELISA 1:5000-20000

Basic Information

Clonality Polyclonal

Immunogen Information

Immunogen Synthesized peptide derived from part region of human protein. AA range:38-138

Specificity DERL3 Polyclonal Antibody detects endogenous levels of protein.

Target Information

Gene name DERL3 C22orf14 DER3 LLN2

Protein Name Derlin-3 (Degradation in endoplasmic reticulum protein 3) (DERtrin-3) (Der1-like protein 3)

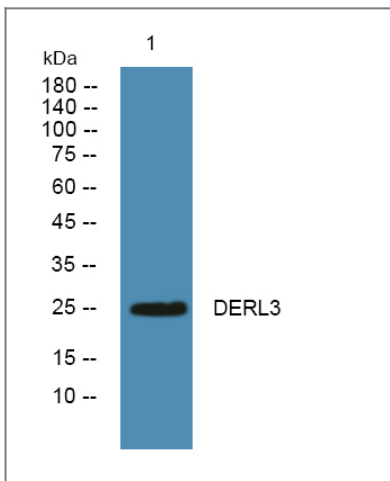
Organism	Gene ID	UniProt ID
Human	91319 ;	Q96Q80 ;
Mouse		Q9D8K3 ;

Cellular Localization Endoplasmic reticulum membrane ; Multi-pass membrane protein .

Tissue specificity Unlike DERL1 and DERL2, restricted to several tissues. Expressed at high levels in placenta, pancreas, spleen and small intestine.

Function Function:Functional component of endoplasmic reticulum-associated degradation (ERAD) for misfolded luminal glycoproteins, but not that of misfolded nonglycoproteins. May act by forming a channel that allows the retrotranslocation of misfolded glycoproteins into the cytosol where they are ubiquitinated and degraded by the proteasome. May mediate the interaction between VCP and the degradation substrate.,induction:Up-regulated in response to ER stress via the ERN1-XBP1 pathway of the unfolded protein response (UPR).,similarity:Belongs to the derlin family.,subunit:Forms homo- and heterooligomers with DERL2 and, to a lesser extent, with DERL1. Interacts with VCP and EDEM1.,tissue specificity:Unlike DERL1 and DERL2, restricted to several tissues. Expressed at high levels in placenta, pancreas, spleen and small intestine.,

Validation Data



Western blot analysis of lysates from U2OS cells, primary antibody was diluted at 1:1000, 4° over night

Contact information

Orders: order.cn@immunoway.com
Support: support.cn@immunoway.com
Telephone: 400-8787-807(China)
Website: <http://www.immunoway.com.cn>
Address: 2200 Ringwood Ave San Jose, CA 95131 USA



Please scan the QR code to access additional product information:
DERL3 Rabbit pAb

