

CO8G Rabbit pAb

CatalogNo: YN3019

Key Features

Host Species

- Rabbit

Reactivity

- Human, Mouse

Applications

- WB, ELISA

MW

- 22kD (Observed)

Isotype

- IgG

Recommended Dilution Ratios

WB 1:500-2000

ELISA 1:5000-20000

Storage

Storage*

-15°C to -25°C/1 year (Do not lower than -25°C)

Formulation

Liquid in PBS containing 50% glycerol, 0.5% BSA and 0.02% sodium azide.

Basic Information

Clonality

Polyclonal

Immunogen Information

Immunogen

Synthesized peptide derived from part region of human protein

Specificity

CO8G Polyclonal Antibody detects endogenous levels of protein.

Target Information

Gene name

C8G

Protein Name Complement component C8 gamma chain

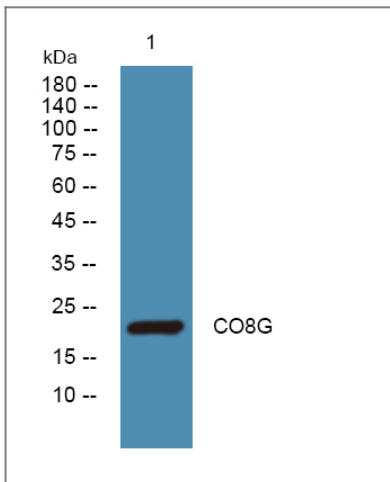
Organism	Gene ID	UniProt ID
Human	733;	P07360;
Mouse		Q8VCG4;

Cellular Localization Secreted.

Tissue specificity Blood,Colon,Liver,

Function Function:C8 is a constituent of the membrane attack complex. C8 binds to the C5B-7 complex, forming the C5B-8 complex. C5-B8 binds C9 and acts as a catalyst in the polymerization of C9. The gamma subunit seems to be able to bind retinol.,similarity:Belongs to the calycin superfamily. Lipocalin family.,subunit:C8 is composed of three chains: alpha, beta and gamma. The alpha and gamma chains are disulfide bonded.,

Validation Data



Western blot analysis of lysates from KB cells, primary antibody was diluted at 1:1000, 4°over night

Contact information

Orders: order.cn@immunoway.com
Support: support.cn@immunoway.com
Telephone: 400-8787-807(China)
Website: <http://www.immunoway.com.cn>
Address: 2200 Ringwood Ave San Jose, CA 95131 USA



Please scan the QR code to access additional product information:
CO8G Rabbit pAb

