

## SUV91 Rabbit pAb

CatalogNo: YN2996

### Key Features

#### Host Species

- Rabbit

#### Reactivity

- Human, Mouse

#### Applications

- WB, ELISA

#### MW

- 45kD (Observed)

#### Isotype

- IgG

### Recommended Dilution Ratios

WB 1:500-2000

ELISA 1:5000-20000

### Storage

#### Storage\*

-15°C to -25°C/1 year (Do not lower than -25°C)

#### Formulation

Liquid in PBS containing 50% glycerol, and 0.02% sodium azide.

### Basic Information

#### Clonality

Polyclonal

### Immunogen Information

#### Immunogen

Synthesized peptide derived from part region of human protein

#### Specificity

SUV91 Polyclonal Antibody detects endogenous levels of protein.

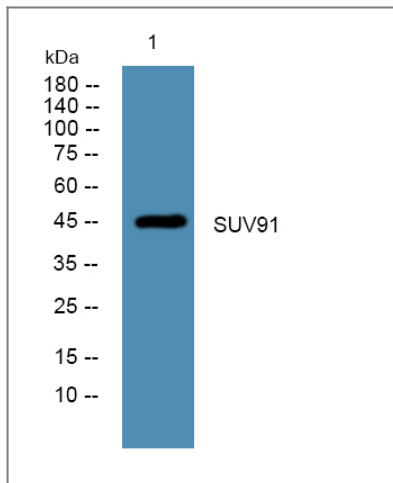
### Target Information

#### Gene name

SUV39H1 KMT1A SUV39H

<b>Protein Name</b>	Histone-lysine N-methyltransferase SUV39H1 (Histone H3-K9 methyltransferase 1) (H3-K9-HMTase 1) (Lysine N-methyltransferase 1A) (Position-effect variegation 3-9 homolog) (Suppressor of variegation 3-9 homolog 1) (Su(var)3-9 homolog 1)		
	<b>Organism</b>	<b>Gene ID</b>	<b>UniProt ID</b>
	Human	<a href="#">6839;</a>	<a href="#">O43463;</a>
	Mouse		<a href="#">O54864;</a>
<b>Cellular Localization</b>	Nucleus. Nucleus lamina. Nucleus, nucleoplasm. Chromosome, centromere. Associates with centromeric constitutive heterochromatin.		
<b>Tissue specificity</b>	B-cell,Epithelium,Lung,Retina,		
<b>Function</b>	<p>Catalytic activity:S-adenosyl-L-methionine + histone L-lysine = S-adenosyl-L-homocysteine + histone N(6)-methyl-L-lysine.,developmental stage:Accumulates during mitosis at centromeres during prometaphase, but dissociates from the centromere at the meta- to anaphase transition.,Domain:Although the SET domain contains the active site of enzymatic activity, both pre-SET and post-SET domains are required for methyltransferase activity. The SET domain also participates to stable binding to heterochromatin.,enzyme regulation:Inhibited by S-adenosyl-L-homocysteine.,Function:Histone methyltransferase that specifically trimethylates 'Lys-9' of histone H3 using monomethylated H3 'Lys-9' as substrate. Also weakly methylates histone H1 (in vitro). H3 'Lys-9' trimethylation represents a specific tag for epigenetic transcriptional repression by recruiting HP1 (CBX1, CBX3 and/or CBX5) proteins to methylated histones. Mainly functions in heterochromatin regions, thereby playing a central role in the establishment of constitutive heterochromatin at pericentric and telomere regions. H3 'Lys-9' trimethylation is also required to direct DNA methylation at pericentric repeats. SUV39H1 is targeted to histone H3 via its interaction with RB1 and is involved in many processes, such as repression of MYOD1-stimulated differentiation, regulation of the control switch for exiting the cell cycle and entering differentiation, repression by the PML-RARA fusion protein, BMP-induced repression, repression of switch recombination to IgA and regulation of telomere length.,PTM:Phosphorylated on serine residues, and to a lesser degree, on threonine residues. The phosphorylated form is stabilized by SBF1 and is less active in its transcriptional repressor function.,similarity:Belongs to the histone-lysine methyltransferase family. Suvar3-9 subfamily.,similarity:Contains 1 chromo domain.,similarity:Contains 1 post-SET domain.,similarity:Contains 1 pre-SET domain.,similarity:Contains 1 SET domain.,subcellular location:Associates with centromeric constitutive heterochromatin.,subunit:Interacts with H3 and H4 histones. Interacts with GFI1B, DNMT3B, CBX1, CBX4, MBD1, RUNX1, RUNX3, MYOD1, SMAD5 and RB1. Interacts with SBF1 through the SET domain. Interacts with HDAC1 and HDAC2 through the N-terminus and associates with the core histone deacetylase complex composed of HDAC1, HDAC2, RBBP4 and RBBP7. In case of infection, interacts with HTLV-1 Tax protein, leading to abrogate Tax transactivation of HTLV-1 LTR.,</p>		

| Validation Data



Western blot analysis of lysates from PC12 cells, primary antibody was diluted at 1:1000, 4°over night

## Contact information

Orders: [order.cn@immunoway.com](mailto:order.cn@immunoway.com)  
 Support: [support.cn@immunoway.com](mailto:support.cn@immunoway.com)  
 Telephone: 400-8787-807(China)  
 Website: <http://www.immunoway.com.cn>  
 Address: 2200 Ringwood Ave San Jose, CA 95131 USA



Please scan the QR code to access additional product information:  
**SUV91 Rabbit pAb**

For Research Use Only. Not for Use in Diagnostic Procedures.

[Antibody](#) | [ELISA Kits](#) | [Protein](#) | [Reagents](#)