

## RFA4 Rabbit pAb

CatalogNo: YN2990

### Key Features

#### Host Species

- Rabbit

#### Reactivity

- Human

#### Applications

- WB, ELISA

#### MW

- 28kD (Observed)

#### Isotype

- IgG

### Recommended Dilution Ratios

**WB 1:500-2000**

**ELISA 1:5000-20000**

### Storage

#### Storage\*

-15°C to -25°C/1 year(Do not lower than -25°C)

#### Formulation

Liquid in PBS containing 50% glycerol, 0.5% BSA and 0.02% sodium azide.

### Basic Information

#### Clonality

Polyclonal

### Immunogen Information

#### Immunogen

Synthesized peptide derived from part region of human protein

#### Specificity

RFA4 Polyclonal Antibody detects endogenous levels of protein.

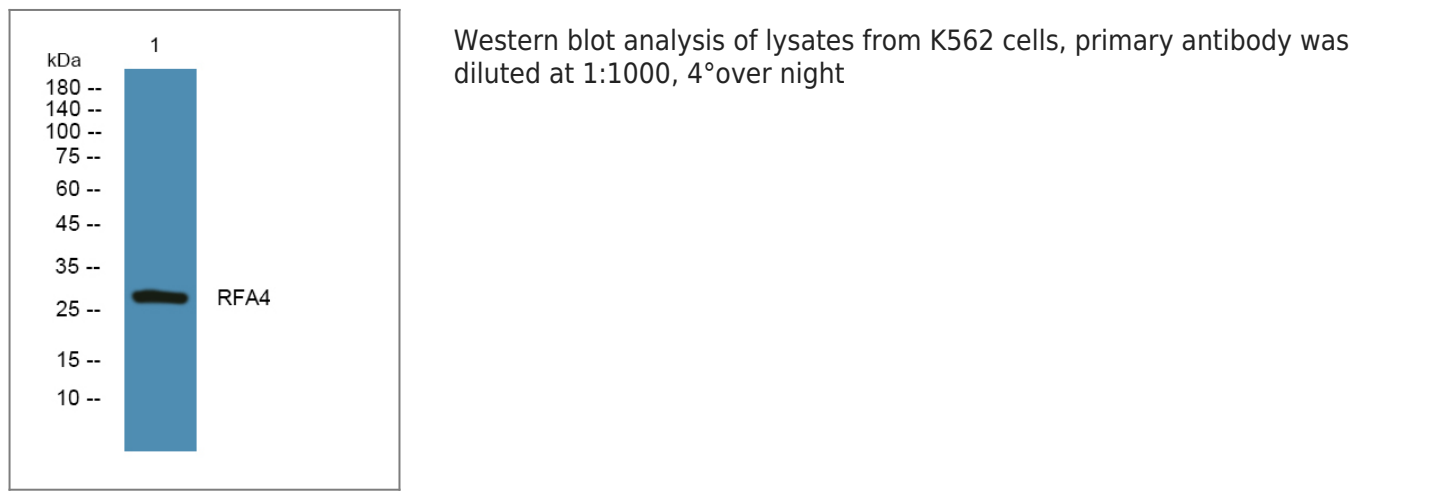
### Target Information

#### Gene name

RPA4

<b>Protein Name</b>	Replication protein A 30 kDa subunit (RP-A p30) (Replication factor A protein 4) (RF-A protein 4)		
	<b>Organism</b>	<b>Gene ID</b>	<b>UniProt ID</b>
	Human	<a href="#">29935;</a>	<a href="#">Q13156;</a>
<b>Cellular Localization</b>	Nucleus . Localizes to DNA repair foci after DNA damage.		
<b>Tissue specificity</b>	Preferentially expressed in placental and colon mucosa. Widely expressed at intermediate or lower levels.		
<b>Function</b>	Function:Absolutely required for simian virus 40 DNA replication in vitro. It participates in a very early step in initiation. RP-A is a single-stranded DNA-binding protein.,subunit:Interacts with RPA1 and RPA3. In a tissue-specic manner, may replace RPA2 in the replication protein A heterotrimer.,tissue specificity:Preferentially expressed in placental and colon mucosa.,		

Validation Data



Contact information

Orders:

Support:

Telephone:

Website:

Address:


order.cn@immunoway.com

support.cn@immunoway.com

400-8787-807(China)

http://www.immunoway.com.cn

2200 Ringwood Ave San Jose, CA 95131 USA



Please scan the QR code to access additional product information:

**RFA4 Rabbit pAb**