

RAMP2 Rabbit pAb

CatalogNo: YN2987

Key Features

Host Species

- Rabbit

Reactivity

- Human, Mouse, Rat

Applications

- WB, ELISA

MW

- 19kD (Observed)

Isotype

- IgG

Storage

Storage* -15°C to -25°C/1 year (Do not lower than -25°C)**Formulation** Liquid in PBS containing 50% glycerol, 0.5% BSA and 0.02% sodium azide.

Recommended Dilution Ratios

WB 1:500-2000**ELISA 1:5000-20000**

Basic Information

Clonality Polyclonal

Immunogen Information

Immunogen Synthesized peptide derived from part region of human protein. AA range:5-55**Specificity** RAMP2 Polyclonal Antibody detects endogenous levels of protein.

Target Information

Gene name RAMP2

Protein Name Receptor activity-modifying protein 2 (Calcitonin-receptor-like receptor activity-modifying protein 2) (CRLR activity-modifying protein 2)

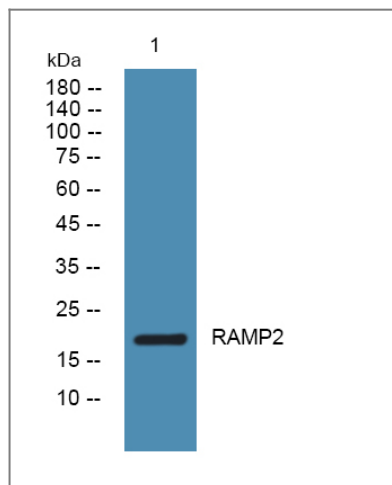
Organism	Gene ID	UniProt ID
Human	10266 ;	O60895 ;
Mouse		Q9WUP0 ;
Rat		Q9JHJ1 ;

Cellular Localization Membrane; Single-pass type I membrane protein.

Tissue specificity Strongly expressed in lung, breast, immune system and fetal tissues.

Function Function:Transports the calcitonin gene-related peptide type 1 receptor (CALCRL) to the plasma membrane. Acts as a receptor for adrenomedullin (AM) together with CALCRL.,similarity:Belongs to the RAMP family.,subunit:Heterodimer of CALCRL and RAMP2.,tissue specificity:Strongly expressed in lung, breast, immune system and fetal tissues.,

Validation Data



Western blot analysis of lysates from DU145 cells, primary antibody was diluted at 1:1000, 4° over night

Contact information

Orders: order.cn@immunoway.com
Support: support.cn@immunoway.com
Telephone: 400-8787-807(China)
Website: <http://www.immunoway.com.cn>
Address: 2200 Ringwood Ave San Jose, CA 95131 USA



Please scan the QR code to access additional product information:
RAMP2 Rabbit pAb

