

DICER Rabbit pAb

CatalogNo: YN2949

Key Features

Host Species

- Rabbit

Reactivity

- Human, Mouse

Applications

- WB, ELISA

MW

- 211kD (Observed)

Isotype

- IgG

Storage

Storage* -15°C to -25°C/1 year (Do not lower than -25°C)

Formulation Liquid in PBS containing 50% glycerol, 0.5% BSA and 0.02% sodium azide.

Recommended Dilution Ratios

WB 1:500-2000

ELISA 1:5000-20000

Basic Information

Clonality Polyclonal

Immunogen Information

Immunogen Synthesized peptide derived from part region of human protein. AA range:1-73

Specificity DICER Polyclonal Antibody detects endogenous levels of protein.

Target Information

Gene name DICER1 DICER HERN A KIAA0928

Protein Name Endoribonuclease Dicer (Helicase with RNase motif) (Helicase MOI)

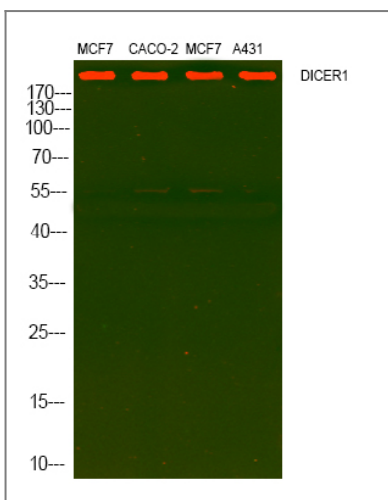
Organism	Gene ID	UniProt ID
Human	23405;	Q9UPY3;
Mouse		Q8R418;

Cellular Localization Cytoplasm . Cytoplasm , perinuclear region .

Tissue specificity Brain ,Lung ,Testis ,

Function cofactor: Binds 2 magnesium or manganese ions per subunit. ,Function: Required for formation of the RNA induced silencing complex (RISC) . Component of the RISC loading complex (RLC) , also known as the micro-RNA (miRNA) loading complex (miRLC) , which is composed of DICER1 , EIF2C2/AGO2 and TARBP2. Within the RLC/miRLC , DICER1 and TARBP2 are required to process precursor miRNAs (pre-miRNAs) to mature miRNAs and then load them onto EIF2C2/AGO2. EIF2C2/AGO2 bound to the mature miRNA constitutes the minimal RISC and may subsequently dissociate from DICER1 and TARBP2. Also cleaves double-stranded RNA to produce short interfering RNAs (siRNAs) which target the selective destruction of complementary RNAs. ,online information: The dark side of RNA - Issue 87 of October 2007 ,similarity: Belongs to the helicase family. Dicer subfamily. ,similarity: Contains 1 Dicer dsRNA-binding fold domain. ,similarity: Contains 1 DRBM (double-stranded RNA-binding) domain. ,similarity: Contains 1 helicase ATP-binding domain. ,similarity: Contains 1 helicase C-terminal domain. ,similarity: Contains 1 PAZ domain. ,similarity: Contains 2 RNase III domains. ,subunit: Component of the RISC loading complex (RLC) , or micro-RNA (miRNA) loading complex (miRLC) , which is composed of DICER1 , EIF2C2/AGO2 and TARBP2. Note that the trimeric RLC/miRLC is also referred to as RISC. Interacts with DHX9 , EIF2C1 , PIWIL1 and PRKRA. Associates with the 60S ribosome. ,

Validation Data



Western Blot analysis of various cell lysis. Primary Antibody was diluted at 1:1000. Secondary antibody (catalog#:RS23920) was diluted at 1:10000

Contact information

Orders: order.cn@immunoway.com
Support: support.cn@immunoway.com
Telephone: 400-8787-807(China)
Website: <http://www.immunoway.com.cn>
Address: 2200 Ringwood Ave San Jose, CA 95131 USA



Please scan the QR code
to access additional
product information:
DICER Rabbit pAb

For Research Use Only. Not for Use in Diagnostic Procedures.

[Antibody](#) | [ELISA Kits](#) | [Protein](#) | [Reagents](#)