

GNAI1 Rabbit pAb

CatalogNo: YN2936

Key Features

Host Species

- Rabbit

Reactivity

- Human, Mouse, Rat

Applications

- WB, ELISA

MW

- 38kD (Observed)

Isotype

- IgG

Recommended Dilution Ratios

WB 1:500-2000**ELISA 1:5000-20000**

Storage

Storage*

-15°C to -25°C/1 year (Do not lower than -25°C)

Formulation

Liquid in PBS containing 50% glycerol, and 0.02% sodium azide.

Basic Information

Clonality

Polyclonal

Immunogen Information

Immunogen

Synthesized peptide derived from part region of human protein

Specificity

GNAI1 Polyclonal Antibody detects endogenous levels of protein.

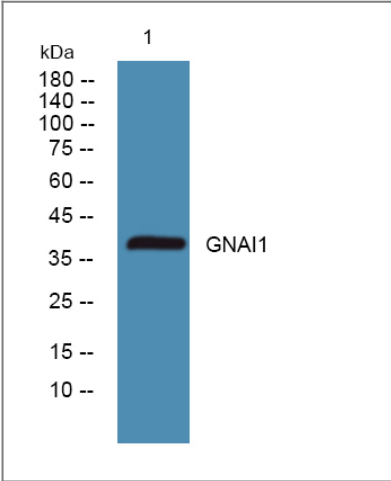
Target Information

Gene name

GNAI1

Protein Name	Guanine nucleotide-binding protein G(i) subunit alpha-1 (Adenylate cyclase-inhibiting G alpha protein)		
	Organism	Gene ID	UniProt ID
	Human	2770;	P63096;
	Mouse		B2RSH2;
	Rat		P10824;
Cellular Localization	Nucleus . Cytoplasm . Cell membrane ; Peripheral membrane protein ; Cytoplasmic side . Cytoplasm, cytoskeleton, microtubule organizing center, centrosome . Cytoplasm, cell cortex . Membrane ; Lipid-anchor . Localizes in the centrosomes of interphase and mitotic cells, but not in centrosomes during cytokinesis. Detected at the cleavage furrow or the midbody (PubMed:17635935). Localized at the plasma membrane throughout mitosis. Colocalizes with RIC8A and RGS14 at the plasma membrane. .		
Tissue specificity	Adipocyte,Brain,		
Function	Function:Guanine nucleotide-binding proteins (G proteins) are involved as modulators or transducers in various transmembrane signaling systems. The G(i) proteins are involved in hormonal regulation of adenylate cyclase: they inhibit the cyclase in response to beta-adrenergic stimuli.,similarity:Belongs to the G-alpha family. G(i/o/t/z) subfamily.,subunit:G proteins are composed of 3 units; alpha, beta and gamma. The alpha chain contains the guanine nucleotide binding site. Interacts with GPSM1.,		

Validation Data



Western blot analysis of lysates from A431 cells, primary antibody was diluted at 1:1000, 4°over night

Contact information

Orders: order.cn@immunoway.com
Support: support.cn@immunoway.com
Telephone: 400-8787-807(China)
Website: <http://www.immunoway.com.cn>
Address: 2200 Ringwood Ave San Jose, CA 95131 USA



Please scan the QR code
to access additional
product information:
GNAI1 Rabbit pAb

For Research Use Only. Not for Use in Diagnostic Procedures.

[Antibody](#) | [ELISA Kits](#) | [Protein](#) | [Reagents](#)