

PACA Rabbit pAb

CatalogNo: YN2907

Key Features

Host Species

- Rabbit

Reactivity

- Human, Mouse, Rat

Applications

- WB, IHC, ELISA

MW

- 19kD (Observed)

Isotype

- IgG

Storage

Storage* -15°C to -25°C/1 year (Do not lower than -25°C)

Formulation Liquid in PBS containing 50% glycerol, 0.5% BSA and 0.02% sodium azide.

Recommended Dilution Ratios

WB 1:500-2000

IHC 1:50-300

ELISA 1:5000-20000

Basic Information

Clonality Polyclonal

Immunogen Information

Immunogen Synthesized peptide derived from part region of human protein. AA range 1-38

Specificity PACA Polyclonal Antibody detects endogenous levels of protein.

Target Information

Gene name ADCYAP1

Protein Name Pituitary adenylate cyclase-activating polypeptide (PACAP) [Cleaved into: PACAP-related peptide (PRP-48) ; Pituitary adenylate cyclase-activating polypeptide 27 (PACAP-27) (PACAP27) ; Pituitary adenylate cyclase-activating polypeptide 38 (PACAP-38) (PACAP38)]

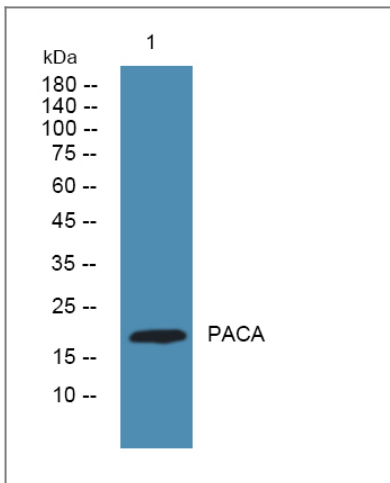
Organism	Gene ID	UniProt ID
Human	116;	P18509;
Mouse		O70176;
Rat		P13589;

Cellular Localization Secreted.

Tissue specificity Brain ,Testis ,

Function Function:Stimulates adenylate cyclase in pituitary cells. ,similarity:Belongs to the glucagon family. ,

Validation Data



Western blot analysis of lysates from K562 cells, primary antibody was diluted at 1:1000, 4°C over night

Contact information

Orders: order.cn@immunoway.com
Support: support.cn@immunoway.com
Telephone: 400-8787-807(China)
Website: <http://www.immunoway.com.cn>
Address: 2200 Ringwood Ave San Jose, CA 95131 USA



Please scan the QR code to access additional product information:
PACA Rabbit pAb

