

HLAG Rabbit pAb

CatalogNo: YN2896

Key Features

Host Species

- Rabbit

Reactivity

- Human

Applications

- WB, ELISA

MW

- 37kD (Observed)

Isotype

- IgG

Recommended Dilution Ratios

WB 1:500-2000**ELISA 1:5000-20000**

Storage

Storage*

-15°C to -25°C/1 year(Do not lower than -25°C)

Formulation

Liquid in PBS containing 50% glycerol, 0.5% BSA and 0.02% sodium azide.

Basic Information

Clonality

Polyclonal

Immunogen Information

Immunogen

Synthesized peptide derived from part region of human protein

Specificity

HLAG Polyclonal Antibody detects endogenous levels of protein.

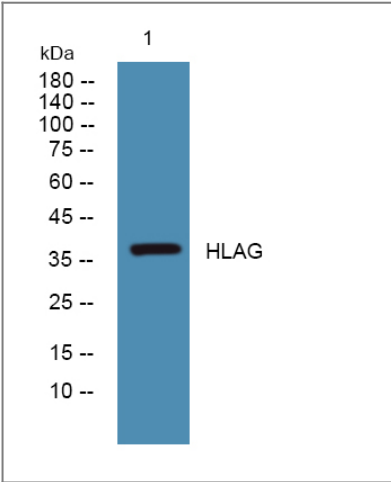
Target Information

Gene name

HLA-G HLA-6.0 HLAG

Protein Name	HLA class I histocompatibility antigen, alpha chain G (HLA G antigen) (MHC class I antigen G)		
	Organism	Gene ID	UniProt ID
	Human	3135 ;	P17693 ;
Cellular Localization	[Isoform 1]: Cell membrane ; Single-pass type I membrane protein . Endoplasmic reticulum membrane . Early endosome membrane .; [Soluble HLA class I histocompatibility antigen, alpha chain G]: Secreted .; [Isoform 2]: Cell membrane ; Single-pass type I membrane protein .; [Isoform 3]: Cell membrane ; Single-pass type I membrane protein .; [Isoform 4]: Cell membrane ; Single-pass type I membrane protein .; [Isoform 5]: Secreted . Early endosome .; [Isoform 6]: Secreted .; [Isoform 7]: Secreted .; Cell projection, filopodium membrane . HLA-G trogocytosis from extravillous trophoblast's filopodia occurs in the majority of decidual NK cells. .		
Tissue specificity	Expressed in adult eye (PubMed:1570318). Expressed in immune cell subsets including monocytes, myeloid and plasmacytoid dendritic cells and regulatory T cells (Tr1)(at protein level) (PubMed:20448110). Secreted by follicular dendritic cell and follicular helper T cells (PubMed:24453251). Isoform 5: Detected in physiological fluids including amniotic fluid and serum (PubMed:11137219). Isoform 7: Expressed in placenta, amniotic membrane, skin cord blood and peripheral blood mononuclear cells (PubMed:11137219).		
Function	Function:Involved in the presentation of foreign antigens to the immune system.,similarity:Belongs to the MHC class I family.,similarity:Contains 1 Ig-like C1-type (immunoglobulin-like) domain.,subunit:Heterodimer of an alpha chain and a beta chain (beta-2-microglobulin).,tissue specificity:Expression of HLAG seems to be restricted to eye cells and tissue.,		

Validation Data



Western blot analysis of lysates from A431 cells, primary antibody was diluted at 1:1000, 4°over night

Contact information

Orders: order.cn@immunoway.com
Support: support.cn@immunoway.com
Telephone: 400-8787-807(China)
Website: <http://www.immunoway.com.cn>
Address: 2200 Ringwood Ave San Jose, CA 95131 USA



Please scan the QR code
to access additional
product information:
HLAG Rabbit pAb

For Research Use Only. Not for Use in Diagnostic Procedures.

[Antibody](#) | [ELISA Kits](#) | [Protein](#) | [Reagents](#)