

## GDF1 Rabbit pAb

CatalogNo: YN2894

### Key Features

#### Host Species

- Rabbit

#### Reactivity

- Human, Mouse

#### Applications

- WB, ELISA

#### MW

- 40kD (Observed)

#### Isotype

- IgG

### Recommended Dilution Ratios

**WB 1:500-2000**

**ELISA 1:5000-20000**

### Storage

#### Storage\*

-15°C to -25°C/1 year (Do not lower than -25°C)

#### Formulation

Liquid in PBS containing 50% glycerol, 0.5% BSA and 0.02% sodium azide.

### Basic Information

#### Clonality

Polyclonal

### Immunogen Information

#### Immunogen

Synthesized peptide derived from part region of human protein AA range: 321-370

#### Specificity

GDF1 Polyclonal Antibody detects endogenous levels of protein.

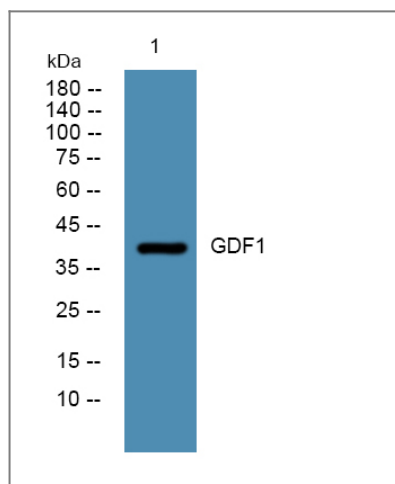
### Target Information

#### Gene name

GDF1

<b>Protein Name</b>	Embryonic growth/differentiation factor 1 (GDF-1)		
	<b>Organism</b>	<b>Gene ID</b>	<b>UniProt ID</b>
	Human	<a href="#">2657;</a>	<a href="#">P27539;</a>
	Mouse		<a href="#">P20863;</a>
<b>Cellular Localization</b>	Secreted.		
<b>Tissue specificity</b>	Expressed in the brain.		
<b>Function</b>	<p>Function:May be either a bona fide (dihydro)ceramide synthase or a modulator of its activity. When overexpressed in cells is involved in the production of sphingolipids containing mainly one fatty acid donor (N-linked stearyl- (C18) ceramide) in a fumonisin B1-independent manner.,Function:May mediate cell differentiation events during embryonic development.,miscellaneous:This protein is produced by a bicistronic gene which also produces the GDF1 protein from a non-overlapping reading frame.,miscellaneous:This protein is produced by a bicistronic gene which also produces the LASS1 protein from a non-overlapping reading frame.,similarity:Belongs to the TGF-beta family.,similarity:Contains 1 TLC (TRAM/LAG1/CLN8) domain.,subcellular location:Isoform 1 may recycle from the Golgi to the endoplasmic reticulum.,subunit:Homodimer; disulfide-linked.,tissue specificity:Expressed in the brain.,</p>		

## Validation Data



Western blot analysis of lysates from SW480 cells, primary antibody was diluted at 1:1000, 4° over night

## Contact information

Orders: [order.cn@immunoway.com](mailto:order.cn@immunoway.com)  
 Support: [support.cn@immunoway.com](mailto:support.cn@immunoway.com)  
 Telephone: 400-8787-807(China)  
 Website: <http://www.immunoway.com.cn>  
 Address: 2200 Ringwood Ave San Jose, CA 95131 USA



Please scan the QR code to access additional product information:  
**GDF1 Rabbit pAb**

