

FAT2 Rabbit pAb

CatalogNo: YN2892

Key Features

Host Species

- Rabbit

Reactivity

- Human, Mouse, Rat

Applications

- IHC, IF

MW

- 478kD (Observed)

Isotype

- IgG

Recommended Dilution Ratios

IHC 1:50-300

IF 1:50-200

Storage

Storage*

-15°C to -25°C/1 year (Do not lower than -25°C)

Formulation

Liquid in PBS containing 50% glycerol, and 0.02% sodium azide.

Basic Information

Clonality

Polyclonal

Immunogen Information

Immunogen

Synthesized peptide derived from part region of human protein

Specificity

FAT2 Polyclonal Antibody detects endogenous levels of protein.

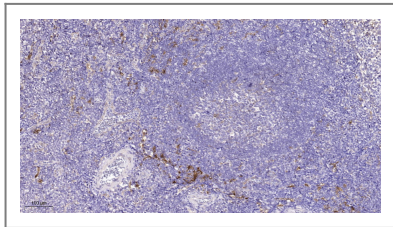
Target Information

Gene name

FAT2 CDHF8 KIAA0811 MEGF1

Protein Name	Protocadherin Fat 2 (hFat2) (Cadherin family member 8) (Multiple epidermal growth factor-like domains protein 1) (Multiple EGF-like domains protein 1)		
	Organism	Gene ID	UniProt ID
	Human	2196;	Q9NYQ8;
	Mouse		Q5F226;
	Rat		O88277;
Cellular Localization	Cell membrane ; Single-pass type I membrane protein . Cell junction . Golgi apparatus, trans-Golgi network . Localized at adhesion zippers (early state of adherens junctions) of keratinocytes. .		
Tissue specificity	Expressed in epidermal keratinocytes, infant brain, cerebellum, and also in a variety of tumors, such as pancreatic cancer, diffuse type gastric cancer, ovarian cancer, esophageal cancer, skin squamous cell carcinoma, head and neck cancer. Not expressed in melanoma cell line A375 cells, normal epidermal melanocytes or normal dermal fibroblasts. Expressed in epidermal keratinocytes and squamous cell carcinoma (at protein level).		
Function	similarity:Contains 1 laminin G-like domain.,similarity:Contains 2 EGF-like domains.,similarity:Contains 32 cadherin domains.,		

Validation Data



Immunohistochemical analysis of paraffin-embedded human tonsil. 1, Tris-EDTA,pH9.0 was used for antigen retrieval. 2 Antibody was diluted at 1:200(4° overnight.3,Secondary antibody was diluted at 1:200(room temperature, 45min).

Contact information

Orders: order.cn@immunoway.com
 Support: support.cn@immunoway.com
 Telephone: 400-8787-807(China)
 Website: <http://www.immunoway.com.cn>
 Address: 2200 Ringwood Ave San Jose, CA 95131 USA



Please scan the QR code to access additional product information:
FAT2 Rabbit pAb