

## Perilipin 2 Rabbit pAb

CatalogNo: YN2883

### Key Features

#### Host Species

- Rabbit

#### Reactivity

- Human, Mouse

#### Applications

- WB, ELISA

#### MW

- 48kD (Observed)

#### Isotype

- IgG

### Recommended Dilution Ratios

WB 1:500-2000

ELISA 1:5000-20000

### Storage

#### Storage\*

-15°C to -25°C/1 year (Do not lower than -25°C)

#### Formulation

Liquid in PBS containing 50% glycerol, 0.5% BSA and 0.02% sodium azide.

### Basic Information

#### Clonality

Polyclonal

### Immunogen Information

#### Immunogen

Synthesized peptide derived from part region of human protein

#### Specificity

PLIN2 Polyclonal Antibody detects endogenous levels of protein.

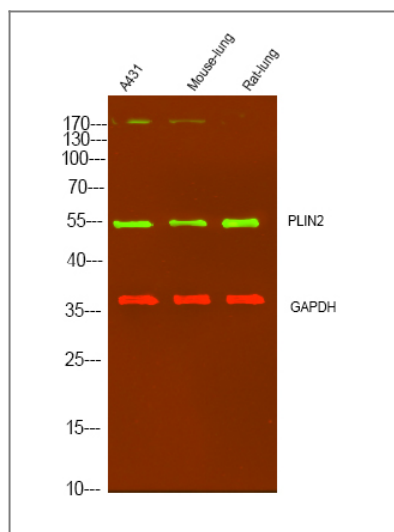
### Target Information

#### Gene name

PLIN2 ADFP

<b>Protein Name</b>	Perilipin-2 (Adipophilin) (Adipose differentiation-related protein) (ADRP)		
	<b>Organism</b>	<b>Gene ID</b>	<b>UniProt ID</b>
	Human	<a href="#">123;</a>	<a href="#">Q99541;</a>
	Mouse		<a href="#">P43883;</a>
<b>Cellular Localization</b>	Membrane ; Peripheral membrane protein . Lipid droplet .		
<b>Tissue specificity</b>	Milk lipid globules.		
<b>Function</b>	lipid transport, response to organic substance, lipid localization, response to organic cyclic substance, monocarboxylic acid transport, organic acid transport, fatty acid transport, long-chain fatty acid transport, lipid storage, response to drug, carboxylic acid transport,		

## Validation Data



Western Blot analysis of various cell lysis. Primary Antibody was diluted at 1:1000. Secondary antibody(catalog#:RS23920) was diluted at 1:10000

## Contact information

Orders: [order.cn@immunoway.com](mailto:order.cn@immunoway.com)  
 Support: [support.cn@immunoway.com](mailto:support.cn@immunoway.com)  
 Telephone: 400-8787-807(China)  
 Website: <http://www.immunoway.com.cn>  
 Address: 2200 Ringwood Ave San Jose, CA 95131 USA



Please scan the QR code to access additional product information:  
**Perilipin 2 Rabbit pAb**