

## PTMA Rabbit pAb

CatalogNo: YN2871

Orthogonal Validated 

### Key Features

#### Host Species

- Rabbit

#### Reactivity

- Human, Mouse

#### Applications

- WB, ELISA

#### MW

- 12kD (Observed)

#### Isotype

- IgG

### Recommended Dilution Ratios

WB 1:500-2000

ELISA 1:5000-20000

### Storage

**Storage\*** -15°C to -25°C/1 year (Do not lower than -25°C)**Formulation** Liquid in PBS containing 50% glycerol, 0.5% BSA and 0.02% sodium azide.

### Basic Information

**Clonality** Polyclonal

### Immunogen Information

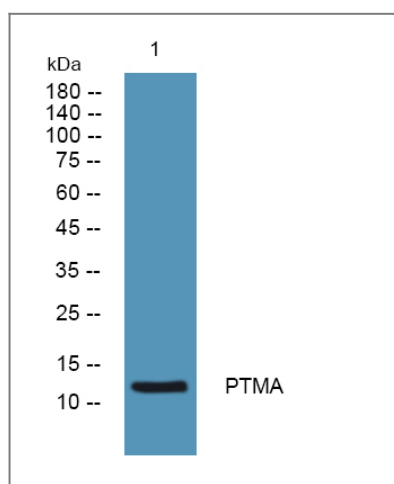
**Immunogen** Synthesized peptide derived from part region of human protein AA range: 1-50**Specificity** PTMA Polyclonal Antibody detects endogenous levels of protein.

### Target Information

**Gene name** PTMA TMSA

<b>Protein Name</b>	Prothymosin alpha [Cleaved into: Thymosin alpha-1]		
	<b>Organism</b>	<b>Gene ID</b>	<b>UniProt ID</b>
	Human	<a href="#">5757;</a>	<a href="#">P06454;</a>
	Mouse		<a href="#">P26350;</a>
	Rat		<a href="#">P06302;</a>
<b>Cellular Localization</b>	Nucleus.		
<b>Tissue specificity</b>	Blood,Brain,Cerebellum,Cervix,Epithelium,Fetal thymus,Liver,Lung,Pancreas,PNS,Prima		
<b>Function</b>	Function:Prothymosin alpha may mediate immune function by conferring resistance to certain opportunistic infections.,PTM:Covalently linked to a small RNA of about 20 nucleotides.,similarity:Belongs to the pro/parathymosin family.,		

## Validation Data



Western blot analysis of lysates from Jurkat cells, primary antibody was diluted at 1:1000, 4°over night

## Contact information

Orders: order.cn@immunoway.com  
 Support: support.cn@immunoway.com  
 Telephone: 400-8787-807(China)  
 Website: <http://www.immunoway.com.cn>  
 Address: 2200 Ringwood Ave San Jose, CA 95131 USA



Please scan the QR code to access additional product information:  
**PTMA Rabbit pAb**