

OR2J1 Rabbit pAb

CatalogNo: YN2753

Key Features

Host Species

- Rabbit

Reactivity

- Human

Applications

- WB,ELISA

MW

- 34kD (Observed)

Isotype

- IgG

Recommended Dilution Ratios

WB 1:500-2000**ELISA 1:5000-20000**

Storage

Storage*

-15°C to -25°C/1 year(Do not lower than -25°C)

Formulation

Liquid in PBS containing 50% glycerol, and 0.02% sodium azide.

Basic Information

Clonality

Polyclonal

Immunogen Information

Immunogen

Synthesized peptide derived from human protein . at AA range: 230-310

Specificity

OR2J1 Polyclonal Antibody detects endogenous levels of protein.

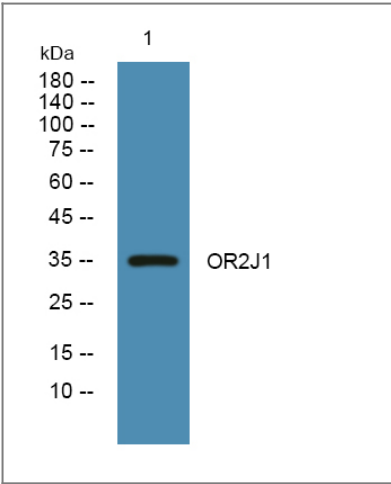
Target Information

Gene name

OR2J1 OR2J1P

Protein Name	Olfactory receptor 2J1 (Hs6M1-4) (Olfactory receptor 6-5) (OR6-5)		
	Organism	Gene ID	UniProt ID
	Human		Q9GZK6 ;
Cellular Localization	Cell membrane; Multi-pass membrane protein.		
Function	Function:Odorant receptor .,polymorphism:A stop codon in the gene coding for this protein at position Gln-194 is responsible for functional diversity thus producing a pseudogene. The stop codon is more frequent in non-Africans than in African-Americans.,similarity:Belongs to the G-protein coupled receptor 1 family.,		

| Validation Data



Western blot analysis of lysates from HCT116 cells, primary antibody was diluted at 1:1000, 4°over night

| Contact information

Orders:

order.cn@immunoway.com

Support:

support.cn@immunoway.com

Telephone:

400-8787-807(China)

Website:

http://www.immunoway.com.cn

Address:

2200 Ringwood Ave San Jose, CA 95131 USA



Please scan the QR code to access additional product information:
OR2J1 Rabbit pAb