

O11A1 Rabbit pAb

CatalogNo: YN2719

Key Features

Host Species

- Rabbit

Reactivity

- Human

Applications

- WB,ELISA

MW

- 34kD (Observed)

Isotype

- IgG

Storage

Storage* -15°C to -25°C/1 year(Do not lower than -25°C)

Formulation Liquid in PBS containing 50% glycerol, 0.5% BSA and 0.02% sodium azide.

Recommended Dilution Ratios

WB 1:500-2000

ELISA 1:5000-20000

Basic Information

Clonality Polyclonal

Immunogen Information

Immunogen Synthesized peptide derived from human protein . at AA range: 230-310

Specificity O11A1 Polyclonal Antibody detects endogenous levels of protein.

Target Information

Gene name OR11A1 OR11A2

Protein Name Olfactory receptor 11A1 (Hs6M1-18) (Olfactory receptor 11A2) (Olfactory receptor OR6-30)

Organism

Gene ID

UniProt ID

Human

[26531](#);

[Q9GZK7](#);

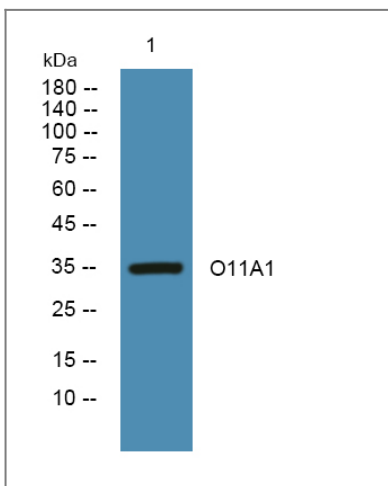
Cellular Localization

Cell membrane; Multi-pass membrane protein.

Tissue specificity Testis,

Function Function:Odorant receptor .,similarity:Belongs to the G-protein coupled receptor 1 family.,

Validation Data



Western blot analysis of lysates from DU145 cells, primary antibody was diluted at 1:1000, 4°over night

Contact information

Orders: order.cn@immunoway.com
Support: support.cn@immunoway.com
Telephone: 400-8787-807(China)
Website: <http://www.immunoway.com.cn>
Address: 2200 Ringwood Ave San Jose, CA 95131 USA



Please scan the QR code to access additional product information:
O11A1 Rabbit pAb

For Research Use Only. Not for Use in Diagnostic Procedures.

[Antibody](#) | [ELISA Kits](#) | [Protein](#) | [Reagents](#)