

TA2R Rabbit pAb

CatalogNo: YN2692

Key Features

Host Species

- Rabbit

Reactivity

- Human,Rat,Mouse

Applications

- WB,ELISA

MW

- 37kD (Observed)

Isotype

- IgG

Recommended Dilution Ratios

WB 1:500-2000

ELISA 1:5000-20000

Storage

Storage*

-15°C to -25°C/1 year(Do not lower than -25°C)

Formulation

Liquid in PBS containing 50% glycerol, 0.5% BSA and 0.02% sodium azide.

Basic Information

Clonality

Polyclonal

Immunogen Information

Immunogen

Synthesized peptide derived from human protein . at AA range: 230-310

Specificity

TA2R Polyclonal Antibody detects endogenous levels of protein.

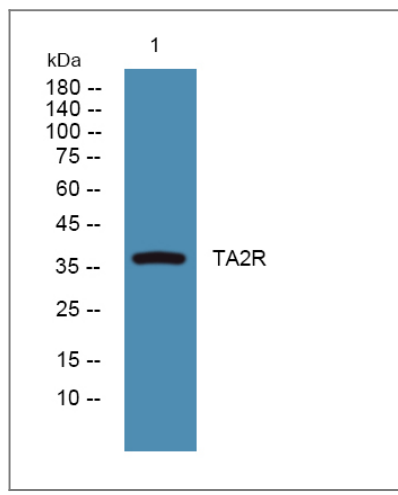
Target Information

Gene name

TBXA2R

Protein Name	Thromboxane A2 receptor (TXA2-R) (Prostanoid TP receptor)		
	Organism	Gene ID	UniProt ID
	Human	6915;	P21731;
	Mouse		P30987;
	Rat		P34978;
Cellular Localization	Cell membrane; Multi-pass membrane protein.		
Tissue specificity	Blood,Endothelial cell,Lung,PCR rescued clones,Placenta,Platelet,		
Function	Disease:Defects in TBXA2R are the cause of a dominantly inherited bleeding disorder [MIM:188070].,Function:Receptor for thromboxane A2 (TXA2), a potent stimulator of platelet aggregation. The activity of this receptor is mediated by a G-protein that activates a phosphatidylinositol-calcium second messenger system. In the kidney, the binding of TXA2 to glomerular TP receptors causes intense vasoconstriction. Activates phospholipase C. Isoform 1 activates adenylyl cyclase, isoform 2 inhibits adenylyl cyclase.,similarity:Belongs to the G-protein coupled receptor 1 family.,		

| Validation Data



Western blot analysis of lysates from PC12 cells, primary antibody was diluted at 1:1000, 4°over night

| Contact information

Orders: order.cn@immunoway.com
 Support: support.cn@immunoway.com
 Telephone: 400-8787-807(China)
 Website: <http://www.immunoway.com.cn>
 Address: 2200 Ringwood Ave San Jose, CA 95131 USA



Please scan the QR code
 to access additional
 product information:
TA2R Rabbit pAb

