

OR1J2 Rabbit pAb

CatalogNo: YN2599

Key Features

Host Species

- Rabbit

Reactivity

- Human

Applications

- WB,ELISA

MW

- 34kD (Observed)

Isotype

- IgG

Storage

Storage* -15°C to -25°C/1 year(Do not lower than -25°C)

Formulation Liquid in PBS containing 50% glycerol, 0.5% BSA and 0.02% sodium azide.

Recommended Dilution Ratios

WB 1:500-2000

ELISA 1:5000-20000

Basic Information

Clonality Polyclonal

Immunogen Information

Immunogen Synthesized peptide derived from part region of human protein AA range: 100-150

Specificity OR1J2 Polyclonal Antibody detects endogenous levels of protein.

Target Information

Gene name OR1J2 OR1J3 OR1J5

Protein Name Olfactory receptor 1J2 (HSA5) (HTPCRX15) (OST044) (Olfactory receptor 1J3) (Olfactory receptor 1J5) (Olfactory receptor OR9-19)

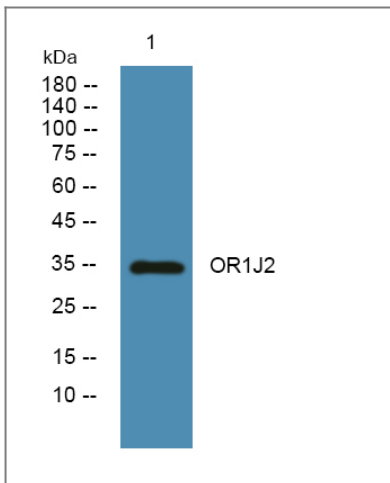
Organism	Gene ID	UniProt ID
Human	26740 ;	Q8NGS2 ;

Cellular Localization Cell membrane; Multi-pass membrane protein.

Tissue specificity Testis,

Function Function:Odorant receptor .,similarity:Belongs to the G-protein coupled receptor 1 family.,

Validation Data



Western blot analysis of lysates from PC12 cells, primary antibody was diluted at 1:1000, 4°over night

Contact information

Orders: order.cn@immunoway.com
Support: support.cn@immunoway.com
Telephone: 400-8787-807(China)
Website: <http://www.immunoway.com.cn>
Address: 2200 Ringwood Ave San Jose, CA 95131 USA



Please scan the QR code to access additional product information:
OR1J2 Rabbit pAb