

BKRB2 Rabbit pAb

CatalogNo: YN2508

Key Features

Host Species

- Rabbit

Reactivity

- Human,Rat,Mouse,

Applications

- WB,ELISA

MW

- 43kD (Observed)

Isotype

- IgG

Recommended Dilution Ratios

WB 1:500-2000

ELISA 1:5000-20000

Storage

Storage* -15°C to -25°C/1 year(Do not lower than -25°C)

Formulation Liquid in PBS containing 50% glycerol, and 0.02% sodium azide.

Basic Information

Clonality Polyclonal

Immunogen Information

Immunogen Synthesized peptide derived from human protein . at AA range: 140-220

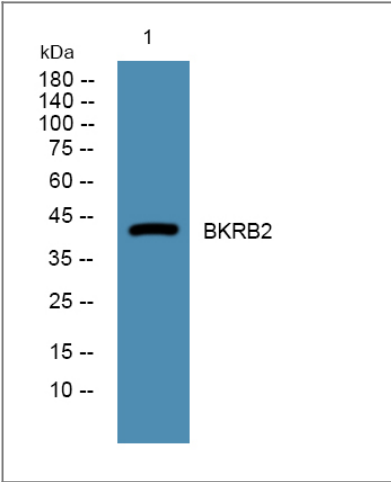
Specificity BKRB2 Polyclonal Antibody detects endogenous levels of protein.

Target Information

Gene name BDKRB2 BKR2

Protein Name	B2 bradykinin receptor (B2R) (BK-2 receptor)		
	Organism	Gene ID	UniProt ID
	Human	624;	P30411;
	Mouse		P32299;
	Rat		P25023;
Cellular Localization	Cell membrane; Multi-pass membrane protein.		
Tissue specificity	Ubiquitous. Widespread in normal smooth muscle tissue and neurons.		
Function	Function:Receptor for bradykinin. It is associated with G proteins that activate a phosphatidylinositol-calcium second messenger system.,online information:Bradykinin receptor entry,similarity:Belongs to the G-protein coupled receptor 1 family.,tissue specificity:Ubiquitous. Widespread in normal smooth muscle tissue and neurons.,		

| Validation Data



Western blot analysis of lysates from DU145 cells, primary antibody was diluted at 1:1000, 4°over night

| Contact information

Orders:

order.cn@immunoway.com

Support:

support.cn@immunoway.com

Telephone:

400-8787-807(China)

Website:

http://www.immunoway.com.cn

Address:

2200 Ringwood Ave San Jose, CA 95131 USA



Please scan the QR code to access additional product information:
BKR2 Rabbit pAb

