

OREX Rabbit pAb

CatalogNo: YN2481

Key Features

Host Species

- Rabbit

Reactivity

- Human, Mouse, Rat

Applications

- WB, ELISA

MW

- 14kD (Observed)

Isotype

- IgG

Recommended Dilution Ratios

WB 1:500-2000**ELISA 1:5000-20000**

Storage

Storage*

-15°C to -25°C/1 year (Do not lower than -25°C)

Formulation

Liquid in PBS containing 50% glycerol, 0.5% BSA and 0.02% sodium azide.

Basic Information

Clonality

Polyclonal

Immunogen Information

Immunogen

Synthesized peptide derived from human protein . at AA range: 21-70

Specificity

OREX Polyclonal Antibody detects endogenous levels of protein.

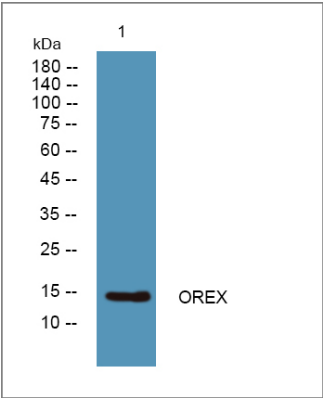
Target Information

Gene name

HCRT OX PPORX PPOX

Protein Name	Orexin (Hypocretin) (Hcrt) [Cleaved into: Orexin-A (Hypocretin-1) (Hcrt1); Orexin-B (Hypocretin-2) (Hcrt2)]		
	Organism	Gene ID	UniProt ID
	Human	3060;	O43612;
	Mouse		O55241;
	Rat		O55232;
Cellular Localization	Rough endoplasmic reticulum . Cytoplasmic vesicle . Cell junction, synapse . Associated with perikaryal rough endoplasmic reticulum as well as cytoplasmic large granular vesicles at synapses. .		
Tissue specificity	Abundantly expressed in subthalamic nucleus but undetectable in other brain regions tested (hypothalamus was not tested) and in heart, placenta, lung, liver, skeletal muscle, kidney and pancreas.		
Function	<p>Disease:Defects in HCRT are a cause of narcolepsy [MIM:161400]. Narcolepsy is a neurological disabling sleep disorder, characterized by excessive daytime sleepiness, sleep fragmentation, symptoms of abnormal rapid-eye-movement (REM) sleep, such as cataplexy, hypnagogic hallucinations, and sleep paralysis. Cataplexy is a sudden loss of muscle tone triggered by emotions, which is the most valuable clinical feature used to diagnose narcolepsy. Human narcolepsy is associated with a deficient orexin system. Orexins are absent and/or greatly diminished in the brain and cerebrospinal fluid (CSF) of most narcoleptic patients. Human narcolepsy is primarily a sporadically occurring disorder but familial clustering has been observed.,Function:Neuropeptides that play a significant role in the regulation of food intake and sleep-wakefulness, possibly by coordinating the complex behavioral and physiologic responses of these complementary homeostatic functions. A broader role in the homeostatic regulation of energy metabolism, autonomic function, hormonal balance and the regulation of body fluids, is also suggested. Orexin-A binds to both OX1R and OX2R with a high affinity, whereas orexin-B binds only to OX2R with a similar high affinity.,online information:Qui dort dine - Issue 15 of October 2001,PTM:Specific enzymatic cleavages at paired basic residues yield the different active peptides.,similarity:Belongs to the orexin family.,subcellular location:Associated with perikaryal rough endoplasmic reticulum as well as cytoplasmic large granular vesicles at synapses.,tissue specificity:Abundantly expressed in subthalamic nucleus but undetectable in other brain regions tested (hypothalamus was not tested) and in heart, placenta, lung, liver, skeletal muscle, kidney and pancreas.,</p>		

Validation Data



Western blot analysis of lysates from PC12 cells, primary antibody was diluted at 1:1000, 4°over night

| Contact information

Orders: order.cn@immunoway.com
Support: support.cn@immunoway.com
Telephone: 400-8787-807(China)
Website: <http://www.immunoway.com.cn>
Address: 2200 Ringwood Ave San Jose, CA 95131 USA



Please scan the QR code
to access additional
product information:
OREX Rabbit pAb

For Research Use Only. Not for Use in Diagnostic Procedures.

[Antibody](#) | [ELISA Kits](#) | [Protein](#) | [Reagents](#)