

ID3 Rabbit pAb

CatalogNo: YN2452

Key Features

Host Species

- Rabbit

Reactivity

- Human, Mouse, Rat

Applications

- WB, ELISA

MW

- 13kD (Observed)

Isotype

- IgG

Recommended Dilution Ratios

WB 1:500-2000

ELISA 1:5000-20000

Storage

Storage*

-15°C to -25°C/1 year (Do not lower than -25°C)

Formulation

Liquid in PBS containing 50% glycerol, 0.5% BSA and 0.02% sodium azide.

Basic Information

Clonality

Polyclonal

Immunogen Information

Immunogen

Synthesized peptide derived from human protein . at AA range: 68-117

Specificity

ID3 Polyclonal Antibody detects endogenous levels of protein.

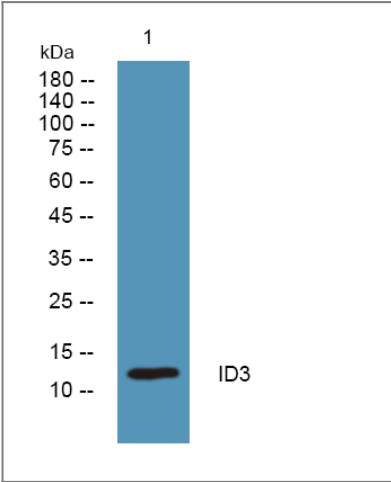
Target Information

Gene name

ID3 1R21 BHLHB25 HEIR1

Protein Name	DNA-binding protein inhibitor ID-3 (Class B basic helix-loop-helix protein 25) (bHLHb25) (Helix-loop-helix protein HEIR-1) (ID-like protein inhibitor HLH 1R21) (Inhibitor of DNA binding 3)		
	Organism	Gene ID	UniProt ID
	Human	3399;	Q02535;
	Mouse		P41133;
	Rat		P41138;
Cellular Localization	Nucleus.		
Tissue specificity	Expressed abundantly in lung, kidney and adrenal gland, but not in adult brain.		
Function	Function:ID (inhibitor of DNA binding) HLH proteins lack a basic DNA-binding domain but are able to form heterodimers with other HLH proteins, thereby inhibiting DNA binding. ID-3 inhibits the binding of E2A-containing protein complexes to muscle creatine kinase E-box enhancer. May inhibit other transcription factors.,induction:By phorbol 12-myristate 13-acetate (PMA).,similarity:Contains 1 basic helix-loop-helix (bHLH) domain.,subunit:Interacts with COPS5 and COPS7A (By similarity). Homodimer, and heterodimer with other HLH proteins.,tissue specificity:Expressed abundantly in lung, kidney and adrenal gland, but not in adult brain.,		

Validation Data



Western blot analysis of lysates from HCT116 cells, primary antibody was diluted at 1:1000, 4°over night

Contact information

Orders: order.cn@immunoway.com
Support: support.cn@immunoway.com
Telephone: 400-8787-807(China)
Website: <http://www.immunoway.com.cn>
Address: 2200 Ringwood Ave San Jose, CA 95131 USA



Please scan the QR code
to access additional
product information:
ID3 Rabbit pAb

For Research Use Only. Not for Use in Diagnostic Procedures.

[Antibody](#) | [ELISA Kits](#) | [Protein](#) | [Reagents](#)