

ES1 Rabbit pAb

CatalogNo: YN2446

Key Features

Host Species

- Rabbit

Reactivity

- Human, Mouse, Rat

Applications

- WB, ELISA

MW

- 29kD (Observed)

Isotype

- IgG

Recommended Dilution Ratios

WB 1:500-2000

ELISA 1:5000-20000

Storage

Storage* -15°C to -25°C/1 year (Do not lower than -25°C)

Formulation Liquid in PBS containing 50% glycerol, 0.5% BSA and 0.02% sodium azide.

Basic Information

Clonality Polyclonal

Immunogen Information

Immunogen Synthesized peptide derived from human protein . at AA range: 121-170

Specificity ES1 Polyclonal Antibody detects endogenous levels of protein.

Target Information

Gene name C21orf33 HES1 KNPI

Protein Name ES1 protein homolog, mitochondrial (Protein GT335) (Protein KNP-I)

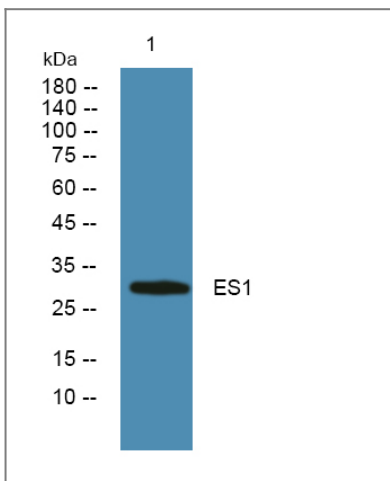
Organism	Gene ID	UniProt ID
Human	8209 ;	P30042 ;
Mouse		Q9D172 ;
Rat		P56571 ;

Cellular Localization mitochondrion,

Tissue specificity Brain,Cajal-Retzius cell,Liver,Lung,

Function similarity:Belongs to the ES1 family.,tissue specificity:Ubiquitous, but strongly expressed in heart and skeletal muscle.,

Validation Data



Western blot analysis of lysates from SH-SY5Y cells, primary antibody was diluted at 1:1000, 4° over night

Contact information

Orders: order.cn@immunoway.com
Support: support.cn@immunoway.com
Telephone: 400-8787-807(China)
Website: <http://www.immunoway.com.cn>
Address: 2200 Ringwood Ave San Jose, CA 95131 USA



Please scan the QR code to access additional product information:
ES1 Rabbit pAb