

## CALCA Rabbit pAb

CatalogNo: YN2444

### Key Features

#### Host Species

- Rabbit

#### Reactivity

- Human, Mouse, Rat

#### Applications

- WB, ELISA

#### MW

- 14kD (Observed)

#### Isotype

- IgG

### Storage

**Storage\*** -15°C to -25°C/1 year (Do not lower than -25°C)

**Formulation** Liquid in PBS containing 50% glycerol, 0.5% BSA and 0.02% sodium azide.

### Recommended Dilution Ratios

**WB 1:500-2000**

**ELISA 1:5000-20000**

### Basic Information

**Clonality** Polyclonal

### Immunogen Information

**Immunogen** Synthesized peptide derived from human protein . at AA range: 71-120

**Specificity** CALCA Polyclonal Antibody detects endogenous levels of protein.

### Target Information

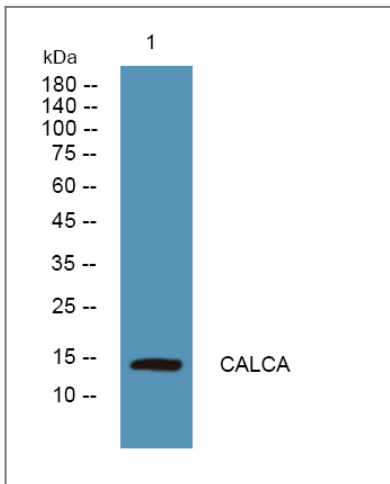
**Gene name** CALCA CALC1

**Protein Name** Calcitonin gene-related peptide 1 (Alpha-type CGRP) (Calcitonin gene-related peptide I) (CGRP-I)

Organism	Gene ID	UniProt ID
Human	<a href="#">796;</a>	<a href="#">P06881;</a>
Mouse		<a href="#">Q99JA0;</a>
Rat		<a href="#">P01256;</a>

**Cellular Localization** Secreted.

## Validation Data



Western blot analysis of lysates from U2OS cells, primary antibody was diluted at 1:1000, 4°C over night

## Contact information

Orders: [order.cn@immunoway.com](mailto:order.cn@immunoway.com)  
Support: [support.cn@immunoway.com](mailto:support.cn@immunoway.com)  
Telephone: 400-8787-807(China)  
Website: <http://www.immunoway.com.cn>  
Address: 2200 Ringwood Ave San Jose, CA 95131 USA



Please scan the QR code to access additional product information:  
**CALCA Rabbit pAb**

For Research Use Only. Not for Use in Diagnostic Procedures.

[Antibody](#) | [ELISA Kits](#) | [Protein](#) | [Reagents](#)